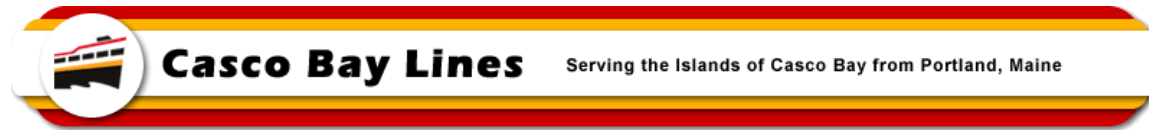


MEMO



TO: File

FROM: Paul D. Pottle, Director of Projects

DATE: August 6, 2025

SUBJECT: Construction Progress Report for MV Battery Steele - #15

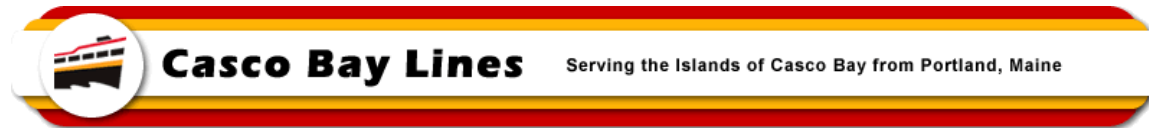
This report covers construction at the Senesco Shipyard for the months of June 2025 and July 2025. The shipyard is making steady progress on many of the vessel's systems as well as the structure of the vessel. The shipyard had a noticeable increase in manpower and production in the month of July and was able to advance a number of vessel features. There remains a good focus on painting areas where hot work has been completed and once painting is done, the insulation team moves in and gets those spaces that require insulation, insulated. Piping and electrical work continued to advance at a good pace and several areas were completed by the end of July. The team continues to work with the Coast Guard on a number of submissions as well as has regular inspections of work elements as that work is completed. No major issues have been identified as of this writing. The Coast Guard is on site several times per week.

The shipyard is now staging equipment for the engine room and should start loading out the vessel during the month of August and hopefully have it completed by mid-September. The Shipyard along with CBL staff and design team members continue to work closely together to resolve minor issues as they arise during the course of construction. Conversations on the schedule are held weekly and there has been no slippage of the schedule since the last report issued. With the current labor force in place, the shipyard should be able to maintain the current schedule that anticipated delivering the vessel to Maine in early 2026. Once the vessel arrives in Maine, there will be some pre-commissioning work associated with getting the vessel and the charger in sync and hopefully crew training and familiarization can start in March of 2026.

The following is a brief overview of the work done from June 1st, 2025, to July 31st, 2025:

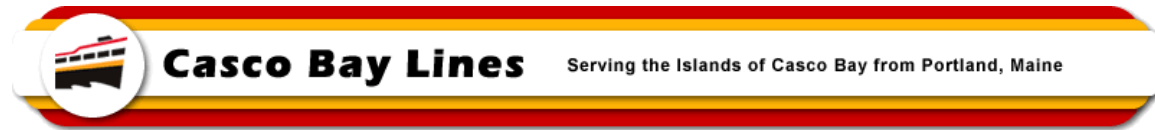
- Worked on engineering support packages for the labor force to use for installing equipment and systems.
- Continued work on exterior painting as well as painting areas within the vessel as hot work is completed.
- Have had several sub-contractors on site with a focus on electrical work, insulation, doors and the elevator.
- Cut out all door openings for the installation of frames and doors.
- Focused on running electrical wiring in the superstructure of the vessel with a concentration in the electronics room and the Pilot House structure.
- Had Pine State Elevator on site installing the elevator components and control panels. The actual finished elevator will be installed in a couple of months.
- Installed penetrations into the Pilot House to support all of the controls and equipment.
- Keel cooler guards were adjusted slightly to correct a protrusion issue that had been identified.

MEMO



- There were multiple discussions on where to locate the venting for the various compartments to avoid crossing watertight boundaries. The final solution is being developed for sign-off by the team and the Coast Guard.
- Continued with pre-alignment work associated with the propulsion drive line.
- Continued work on passenger benches.
- Modified the PFD locker locations to provide more adequate coverage of the entire vessel.
- Installed various piping segments and pumps for the various equipment and started making some of the hook-ups.
- Installed forward and side propulsion cooling systems.
- Installed HVAC cooling system.
- Installed generator cooling system.
- Installed all insulation to the electronics room, Pilot House and crew locker room and restroom with much of the wire mesh sheathing to finish.
- Installed heaters in the Lazarettes and voids.
- Installed Fire Hose cabinets throughout the ferry.
- Identified where to locate the phones and horns & speakers and started installing base foundations and running wiring.
- Installed diamond plate flooring in voids 2 and 3.
- Nearly completed the tempered water piping system with pumps. Installed outlets and switches in the voids and lazarettes.
- Fabricated chart table for Pilot House and staged for installation.
- Made additional submissions as well as responded to inquiries for the US Coast Guard.
- The US Coast Guard continues to have a presence at the shipyard, inspecting completed work and signing off on areas that have passed the inspection.

MEMO



6802 –Battery Steele

MEMO



6743 – Typical Standard Door for Cabin Spaces



6746 – Doors Staged on Vessel for Installation



6749 – Bilge piping Shutoff Valve



6750 – Bilge Piping Shutoff Valve

MEMO



6751 – Restroom Doorway Cut for Door Installation



6752 – Restroom Piping & Insulation

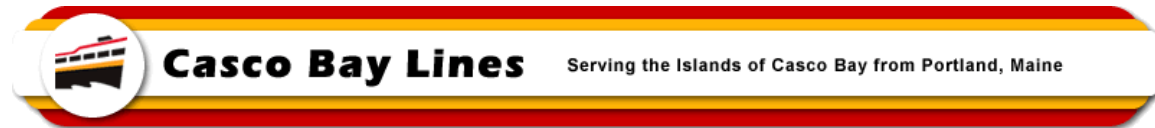


6753 – Penetration Collars into Charging Socket Enclosure Area

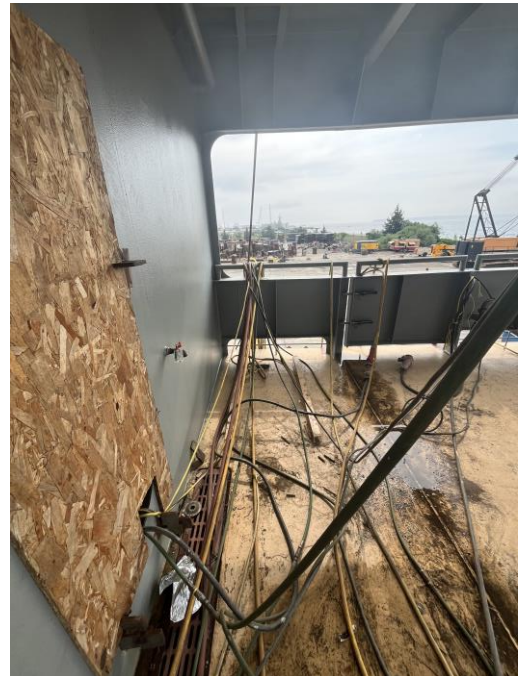


6754 – Piping & Down Comers in Sewer Tank Bay w/Insulation in Place

MEMO



6759 – Locker Foundation Near Side Loading Gate



6760 – Locker Foundation Near Side Loading Gate

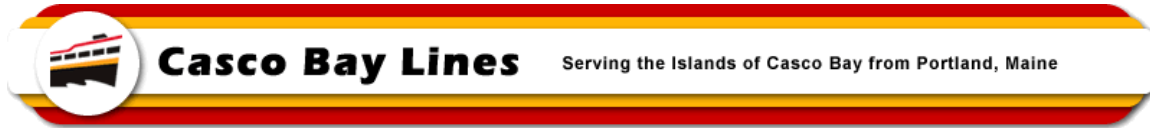


6767 – Lighting Installed at Pilot House



6768 – Lighting Installed at Pilot House

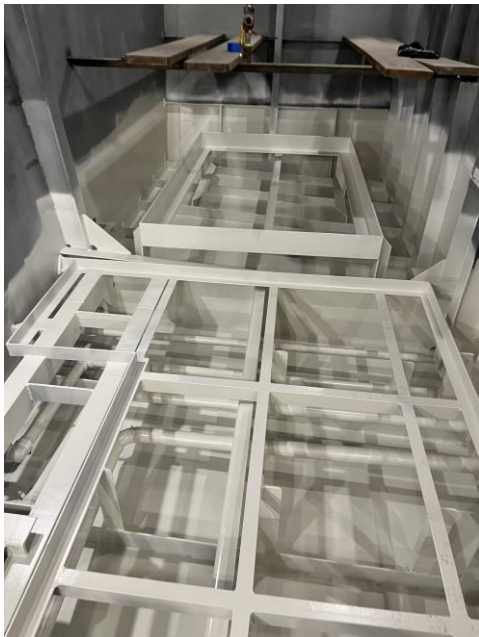
MEMO



6770 – Typical Exterior Area Light at PH



6771 – Typical Exterior Area Light at PH



6772 – Portable Water Tank Foundation in Engine Room



6773 – Portable Water Tank Foundation in Engine Room

MEMO



6774 – Cleaning Locker w/Piping in Main Deck Starboard Cabin



6775 – HVAC Piping in Void 2



6815 – Penetration Collar from Electronics Room to Pilot House



6806 - Penetration Collar from Electronics Room to Pilot House

MEMO



6805 – Electrical Collar Penetration into Electronics Room



6807 – Electrical Penetration into Pilot House



6810 – Electrical Collar Penetration into Electronics Room



6812 – Electrical Collar Penetration from Electronics Room into Pilot House

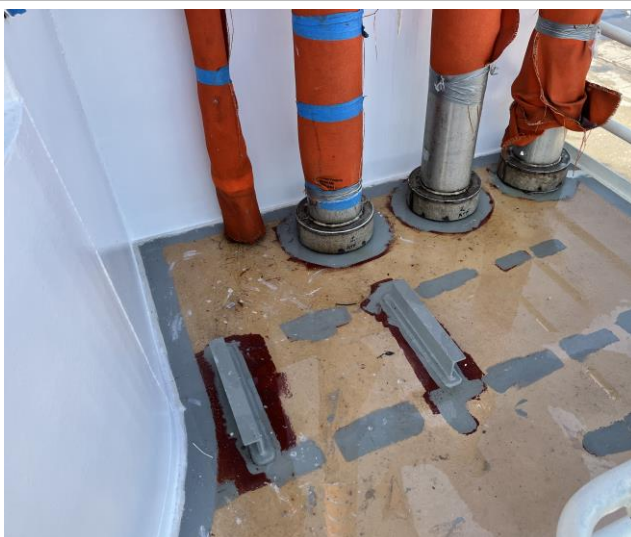
MEMO



6816 – Pilot House Penetration



6817 – Pilot House Penetration



6820 – Condenser Foundation @ PH Exhaust Piping



6821 – Bulkhead Penetrations from 02 Crew Restroom to Outside

MEMO



6822 – Exhaust Vent into Crew Locker Rm. – 02 Deck



6823 – Typ. Light & Wiring for Covered Passenger Areas

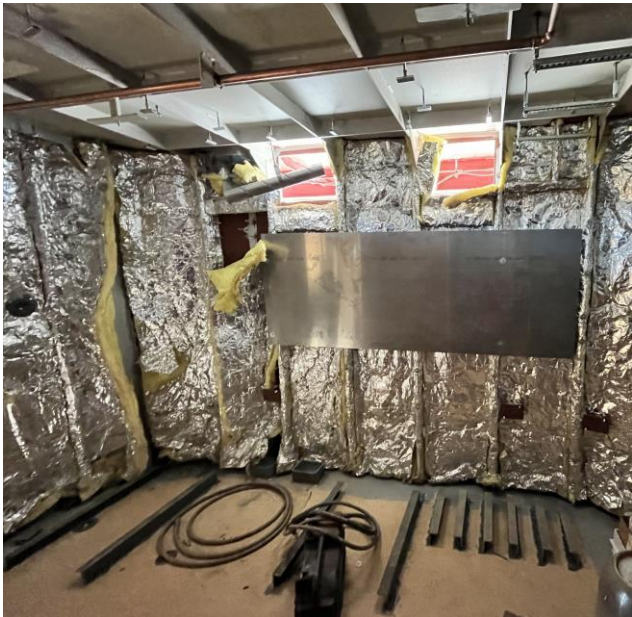


6824 – Installed Door to Main Deck Starboard Restroom



6833 – Installed Door to Main Deck Port Cabin – Bow End

MEMO



6834 – Foundations & Equipment Backboard in Electronics Room – 02 Deck



6835 – Setting Electrical Panel Boxes in Electronics Room



6836 – Foundations & Equipment Backboard in Electronics Room – 02 Deck



6837 – Door Installed to 01 Deck Crew Locker

MEMO



6838 – Door Installed to 01 Deck Crew Locker



6839 – Electrical Raceway in 01 Starboard Cabin

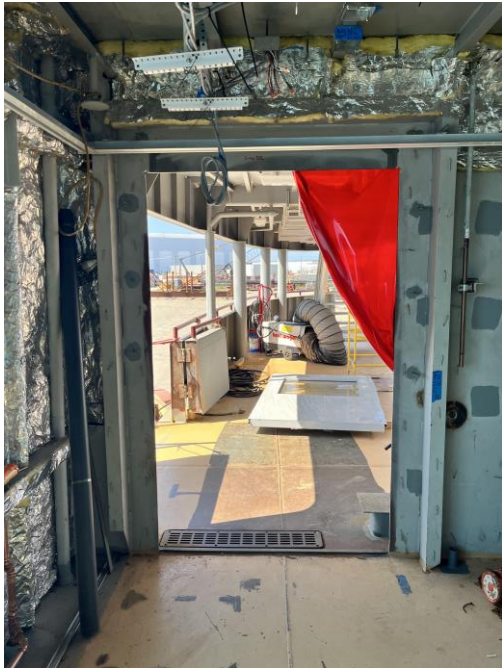


6850 – Installing Elevator Framing Components

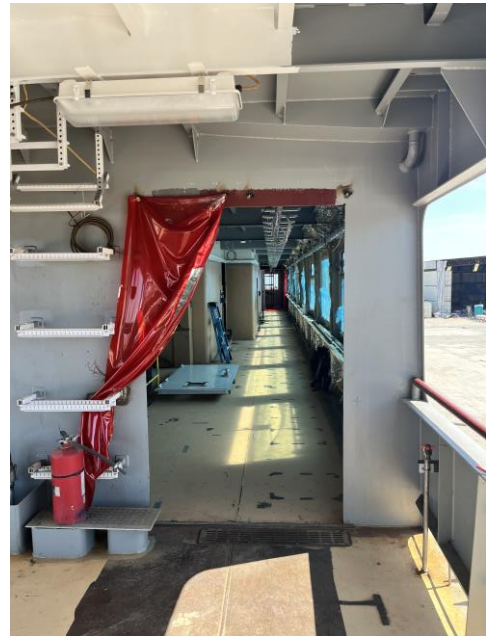


6851 – Looking Up Elevator Shaft

MEMO



6860 – Doorway Cut for Main Deck Starboard Cabin



6861 – Looking into Main Deck Starboard Cabin
w/Charger Raceway on the Left

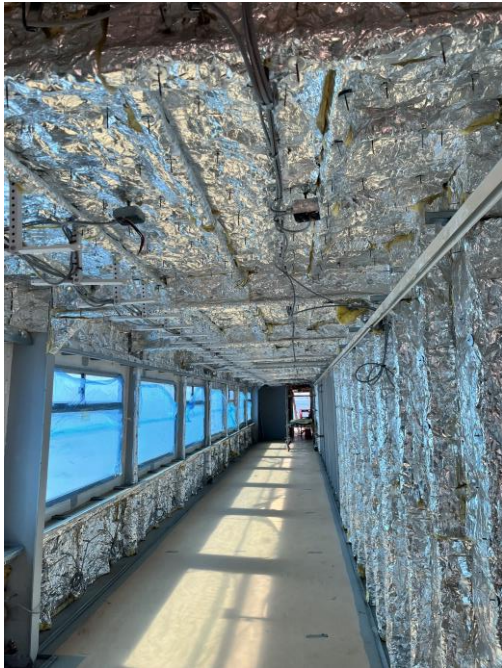


6863 – Door Installed Main Deck Port Cabin - Bow



6864 – Looking Out Same Door

MEMO



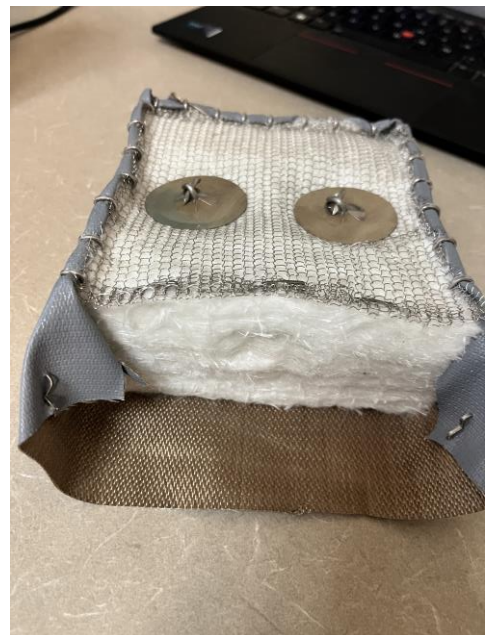
6865 – Fully Insulated 01 Deck Port Cabin



6918 – Installing Wiring in Electronics Room

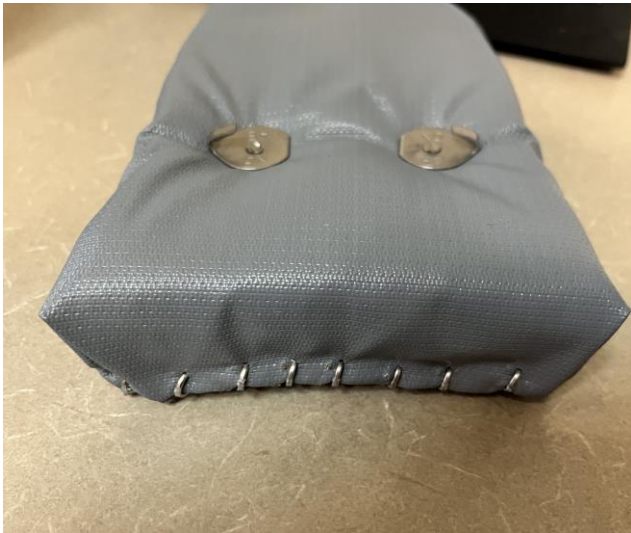
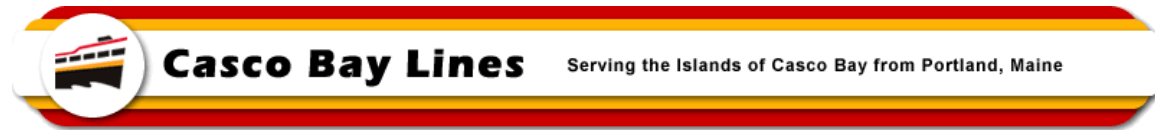


6924 – Bulkhead Penetration into 02 Deck Restroom
with Primer Paint



6928 – Exhaust Insulation Blanket Sample

MEMO



6932 – Exhaust Insulation Blanket Sample



6934 – Foundation for HPU for Elevator

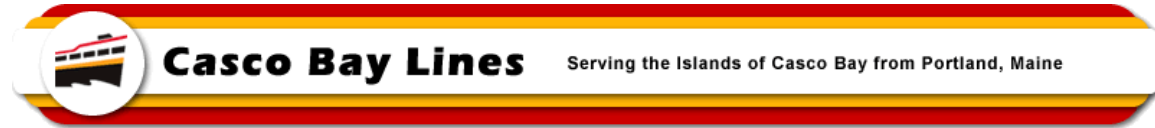


6935 – Typ. Heater in Switch Board Room

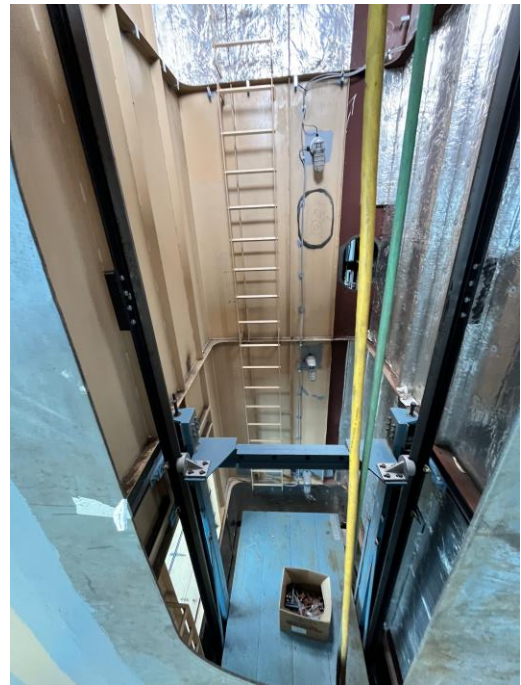


6936 – Typ. Heater in Switch Board Room

MEMO



6937 – Piping in Engine Room w/Valves and Painted Out



6940 – Elevator Component Installation

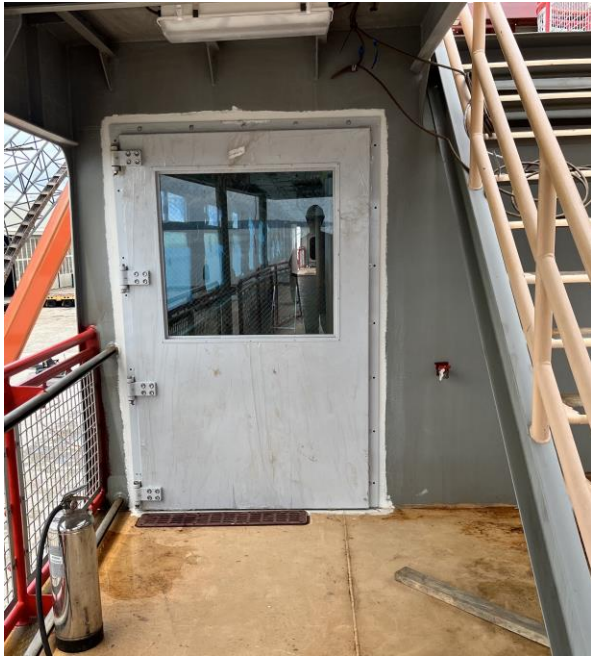
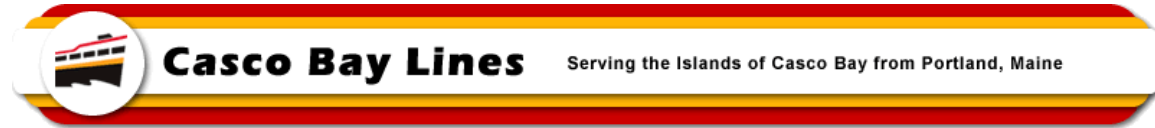


6941 – Electronics Room Wiring & Lights Being Installed

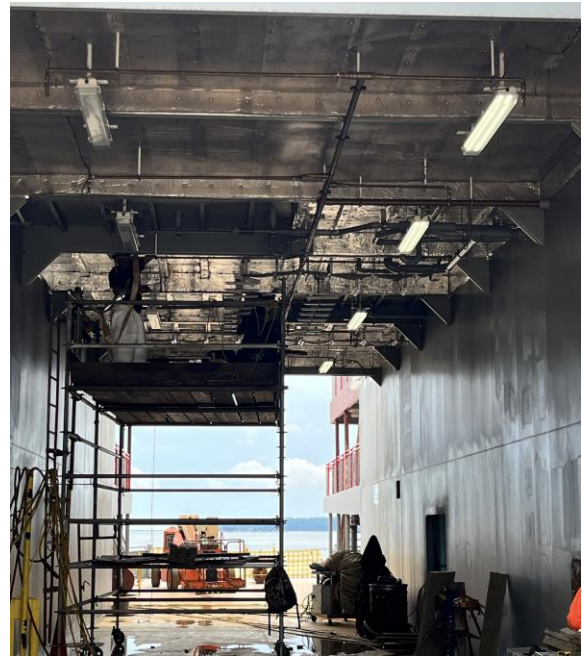


6942 - Electronics Room Wiring & Lights Being Installed

MEMO



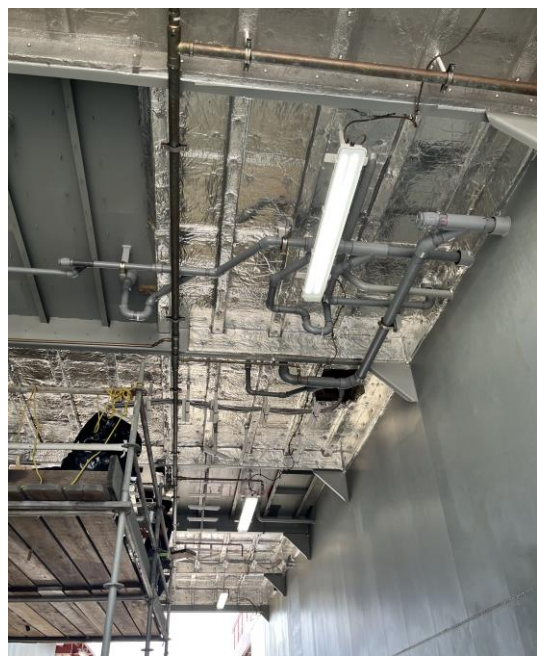
6944 – 01 Deck Bow Starboard Cabin Door



6945 – Lighting & Insulation in Vehicle Alleyway



6946 – Lighting & Insulation in Vehicle Alleyway
W/Mesh Sheathing in Place

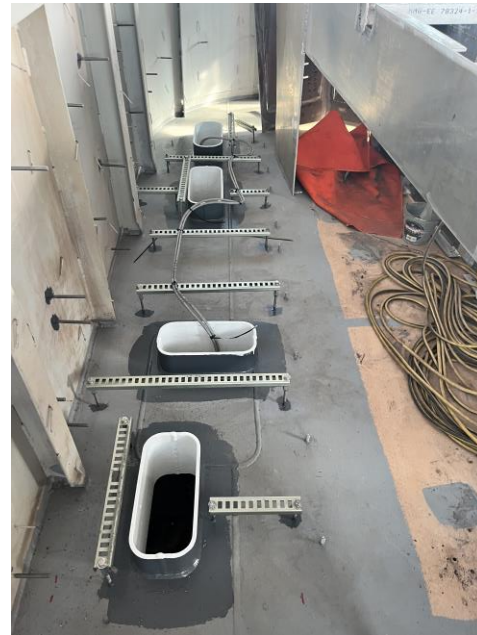


6948 – Lighting & Insulation in Vehicle Alleyway
W/Mesh Sheathing in Place

MEMO



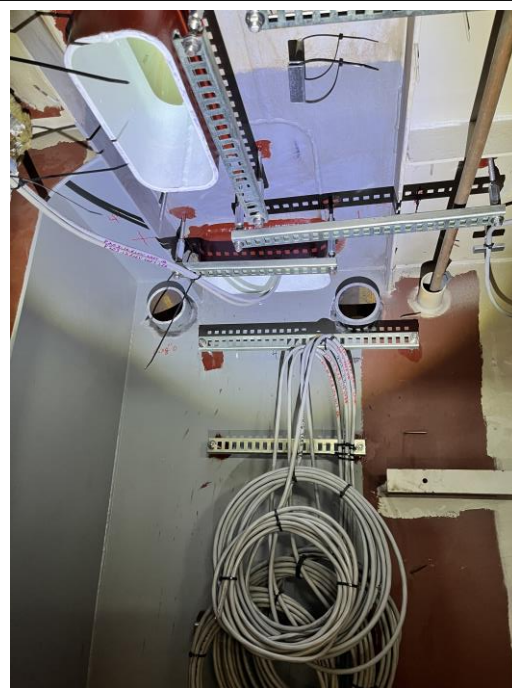
6949 – HPU for Elevator Being Set in Engine Room



6956 – Penetration Collars from Electronics Room into Pilot House



6962 – Tonnage Opening in Pilot House Structure



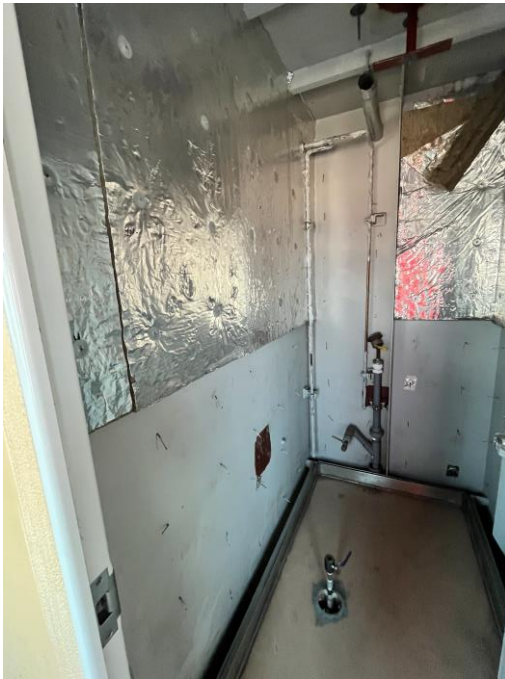
6967 – Wiring in Electronics Room

MEMO

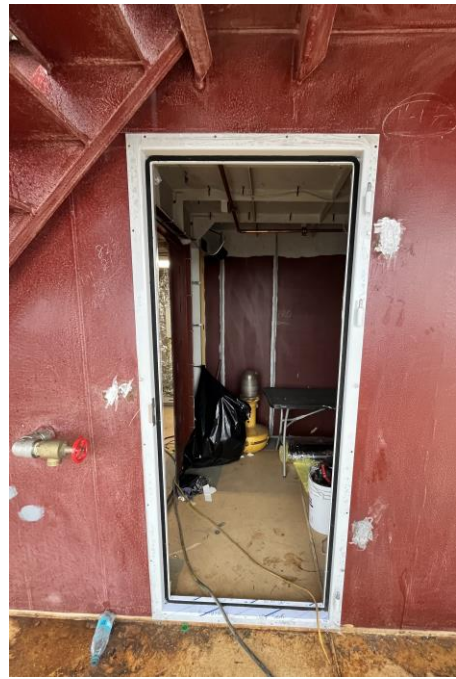


Casco Bay Lines

Serving the Islands of Casco Bay from Portland, Maine



6968 – Cleaning Locker Space on Main Deck



6995 – Doorway into Crew Locker Room on 02 Deck



6996 – Crew Locker Room Rest Room Piping



6999 – Insulation in Electronics Room

MEMO

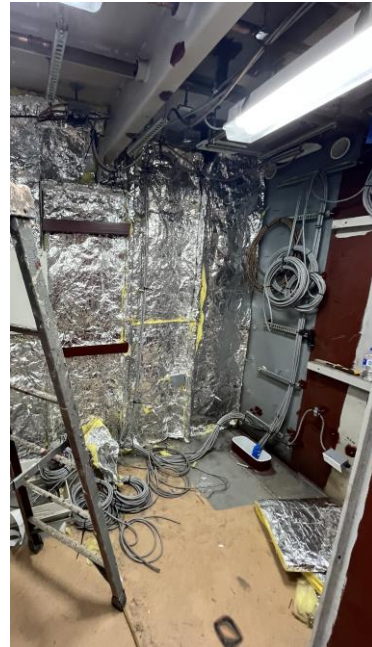


Casco Bay Lines

Serving the Islands of Casco Bay from Portland, Maine



7001 – Insulation in Electronics Room



7002 - Insulation in Electronics Room

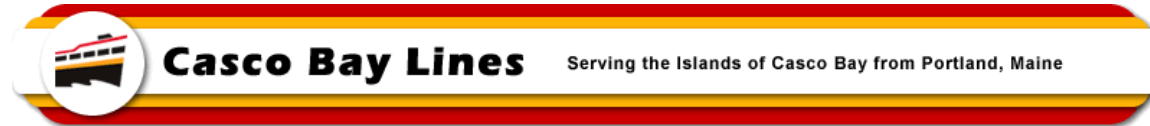


7010 – Stern Cabin Door Opening to Main Deck
Starboard Cabin



7011 – Stern 01 Deck Starboard Cabin Door

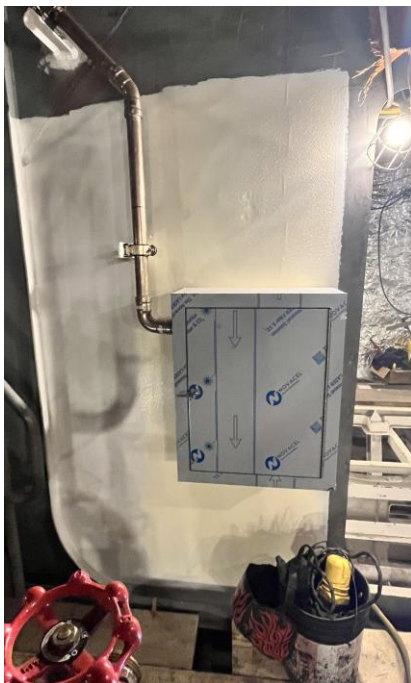
MEMO



7015 – Typical Door Hinge for Cabin Door



7050 – Unit Heater – Engine Room – Gen Bay



7051 – Fire Main Enclosure in Engine Room



7052 – Manifold for HVAC Tempered Water System

MEMO



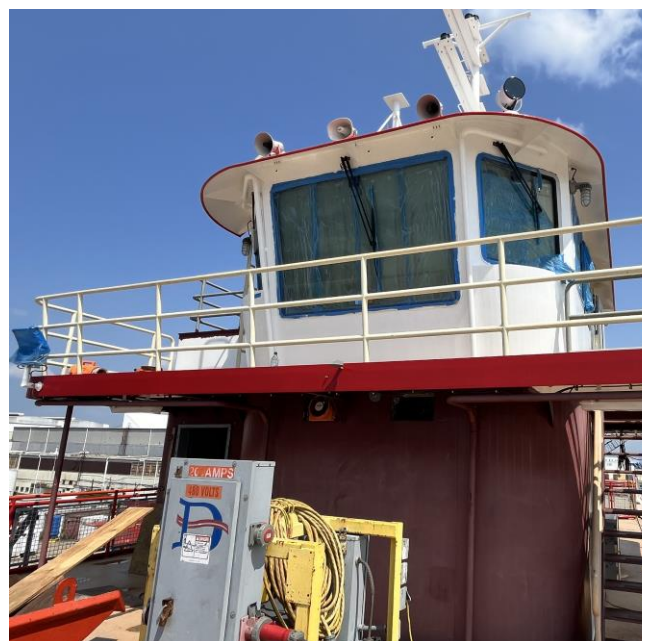
7053 – Control Panel for Elevator



7054 – PFD Locker on Main Deck



7057 – Fire Main Hose Hook-Up

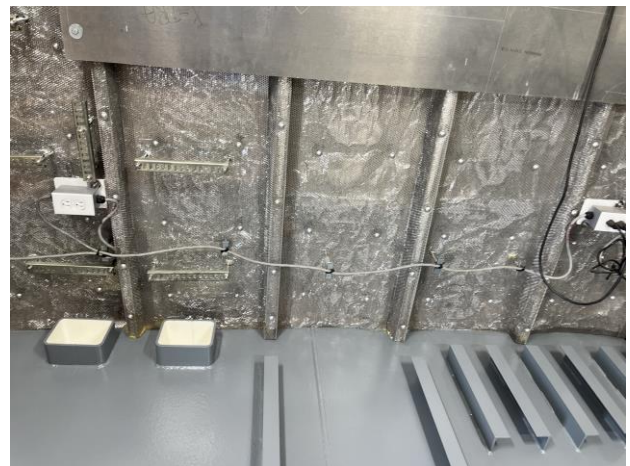


7059 – Wipers Installed on PH windowsT

MEMO



7064 – Typical Deck Drain at Cabin Doors



7066 – Installing Outlets, Wiring and Finish Wall Mesh in Electronics Room



7071 – Outlet & Switch in Lazarette



7073 – Unit Heater in Lazarette

MEMO



Casco Bay Lines

Serving the Islands of Casco Bay from Portland, Maine



7077 – Circulator Pumps in Boiler Spece



7080 – Fire Main & Bilge Pumps in Engine Room

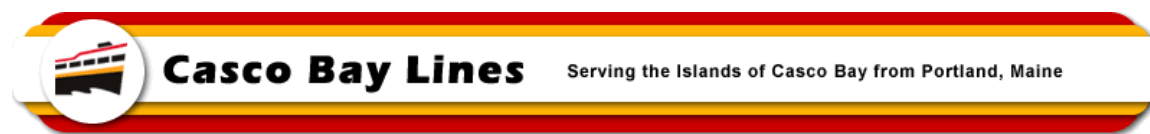


7082 – PH Console In Place After Electrical Chase Work was Completed



7083 – Search Light on Top of PH

MEMO



7086 – PH Mast w/Navigation Lights Being Installed



7087 – Wiper on Small PH Window

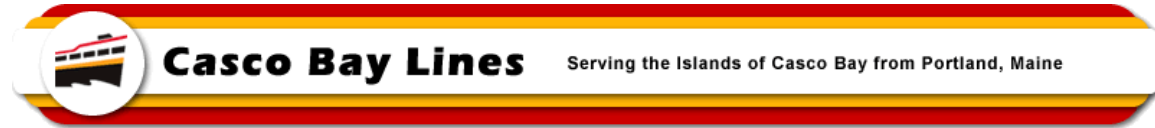


7088 – Wiper on Larger PH Window

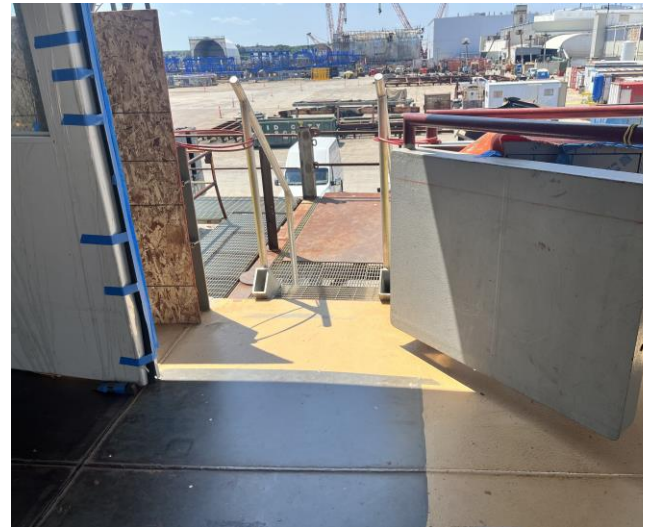


7091 – Side Navigation Lights on PH Structure

MEMO



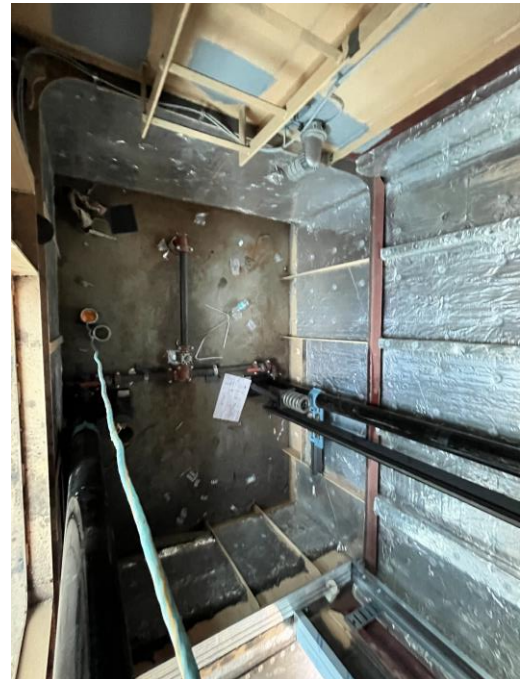
7092 – Elevator Door w/Controls



7093 – Side Loading Gate



7098– Potable Water Pumps in Engine Room

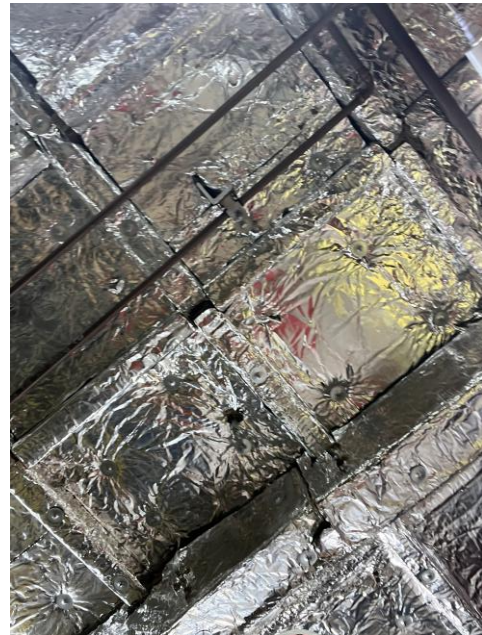


7099 – Looking Down Elevator Shaft

MEMO



7100 – Looking at Underside of Elevator Platform



7103 – Completed Insulation – Typ. Around Vessel



7104 – Insulation w/Mesh Covering in Place



7109 – Lighting & Door at Man Overboard Station

MEMO



7116 – Installing an Electrical Collar Penetration



7118 – Tonnage Door into Engine Room for Equipment Loadout



7119 – Setting Audio Communication Components in Electronics Room



7120 – Setting Panel Box and Back-Up Batteries in Electronics Room

MEMO

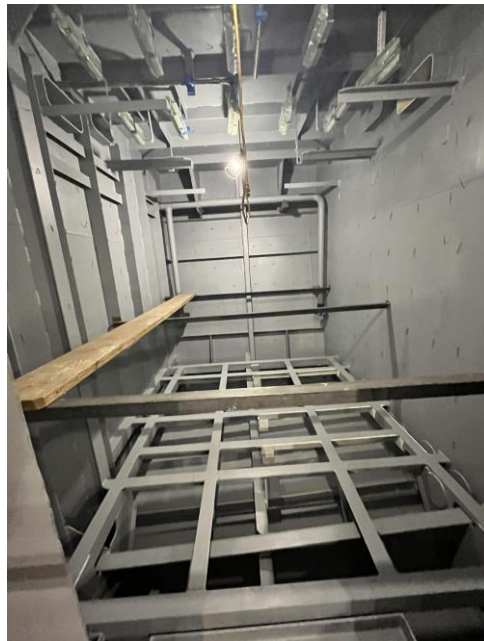


Casco Bay Lines

Serving the Islands of Casco Bay from Portland, Maine



7122 – Bilge & Fire Main w/Sprinkler Pumps



7126 – Painted Battery Room Before Battery Installation

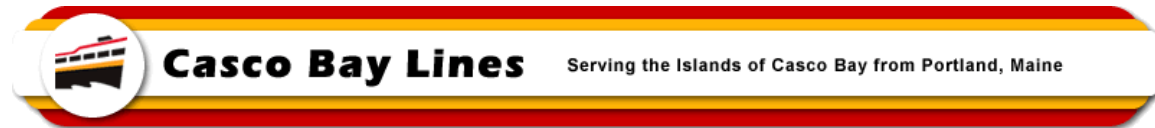


7128 – Potable Water Pumps



7129 – Unit Heater in a Void Space Being Tied to Tempered Water Piping

MEMO



7131 – Communication Equipment & Back-Up Batteries in Electronics Room



7132 – Communication Equipment & Back-Up Batteries in Electronics Room



7133 – Top of Side Navigation Lights



7134 – Door to Pilot House

MEMO



6757 – Port View with Some Finish Paint in Place



6878 – Starboard View with Iconic Colors Being Added