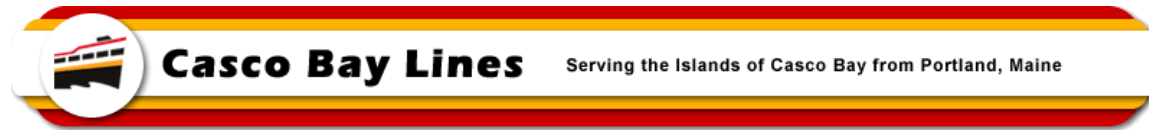


MEMO



TO: File

FROM: Paul D. Pottle, Director of Projects

DATE: June 6, 2025

SUBJECT: Construction Progress Report for MV Battery Steele - #14

This report covers construction at the Senesco Shipyard for the months of April 2025 and May 2025. The shipyard is making steady progress on many of the vessel's systems as well as the structure of the vessel. The shipyard continues to keep a big focus on painting sections of the vessel as work is completed and when painting is done in an area, if insulation is required, it is installed, and the area is readied for finishing. Piping for the heating systems was advanced throughout the vessel. Work continued also in various areas to support the upcoming installation of all of the electrical systems. Additional submissions were made to the Coast Guard, and some approvals were received. Inspections by the US Coast Guard are ongoing, with no major issues identified as of this writing. The Coast Guard is on site several times per week inspecting work completed since their last visit and signs off on work that meets the standards.

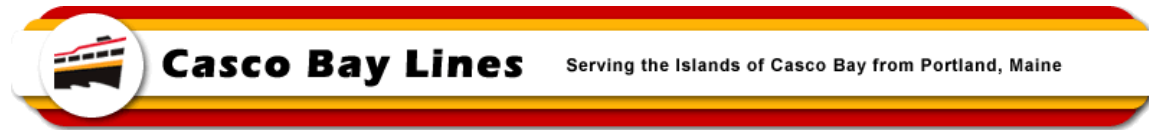
The shipyard fabricated the pilothouse console and placed it in the pilothouse and installed the remaining window that was left out so the console could be moved in. They started to install some of the passenger lighting under the pilothouse walkway, and they were able to install some of the horns and loud hailer. Completed benches were placed on the 02 deck so that final installation work could begin.

CBL and the shipyard continue to have regular conversations on schedule and the pending delivery date of the vessel to Maine. While steady progress is being made, the completion date continues to slip as some areas need to be re-addressed, or efforts take more time than anticipated. The shipyard is currently re-evaluating the current schedule with their subcontractors and their own staff and will issue an updated schedule in the next couple of weeks. It is expected that the delivery date will slip further, but how much is not known at this time. CBL staff will continue to apply pressure on the shipyard to maintain the current schedule, but we do not want to compromise the final quality of the vessel to improve delivery.

The following is a brief overview of the work done from April 1st, 2025, to May 31st, 2025:

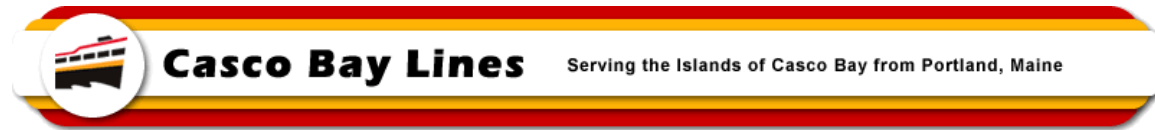
- Welded studs on hull for anodes.
- Installed studs for wire trays.
- Installed tempered water system piping throughout the vessel. Still need to install the boiler and the smaller heating units.
- Installing wireway collars and downcomers in support of upcoming electrical wiring distribution throughout the vessel. Did limited painting on completed collar and downcomer components.
- Started installing HVAC penetrations.
- Removed piping in the battery rooms and closed off the cutouts with doubler plates.
- The cutouts in the hull structure were closed.

MEMO



- Began installing HVAC vents.
- Stenciled door cutouts for all doors openings in preparation of cutting for the door installation.
- Installed radar mast supports, search light , loud hailer and speaker system platforms/foundations on the top of the pilothouse and around the vessel.
- Fabricated and set pilothouse console in the pilothouse.
- Installed final pilothouse window.
- Continued production work on the seating (benches) for the vessel.
- Continued painting throughout the vessel as as became available and weather allowed.
- Began pre-alignment procedures and work for the installation of the shafts.
- Applied paint to the sliding gates.
- The battery manufacturer, Corvus, was on site to check on the charge status of the stored batteries and to charge as necessary. Two battery modules were identified to be replaced by Corvus.
- Continued work on installation of fire main piping.
- Started installing tempered water piping for the heating system throughout the vessel.
- Installed some of the lighting around the pilothouse (flood and passenger lighting).
- Started installing some of the benches on the 02 deck.
- Completed some exterior painting on the starboard superstructure of the vessel.
- Continued with joinery work on interior compartments for future finishes.
- Made additional submissions as well as responded to inquiries for the US Coast Guard
- The US Coast Guard continues to have a presence at the shipyard, inspecting completed work and signing off on areas that have passed the inspection

MEMO



6614 – Looking at The Bow of Battery Steele

MEMO



37415 – Shrink Wrapping Electrical Cabinet until Ready to Install



11923 – Wrapped Panel Placed on Vessel

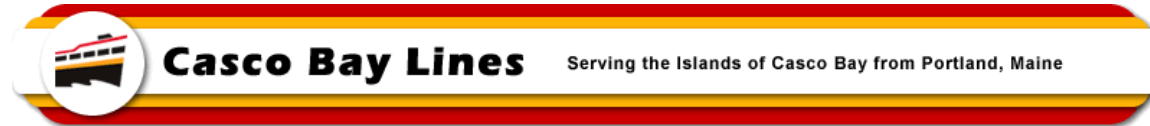


09240 – Control Cabinet w/ Emergency Stop



82924 – Power & Energy Management Panel (PEMS)

MEMO



52418 – Electric Propulsion Motor Set in Place



61987 – Motor Wrapped to Protect It

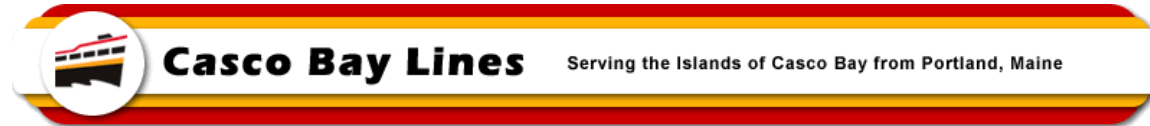


36245 – Motor Covered w/Protective Blanket

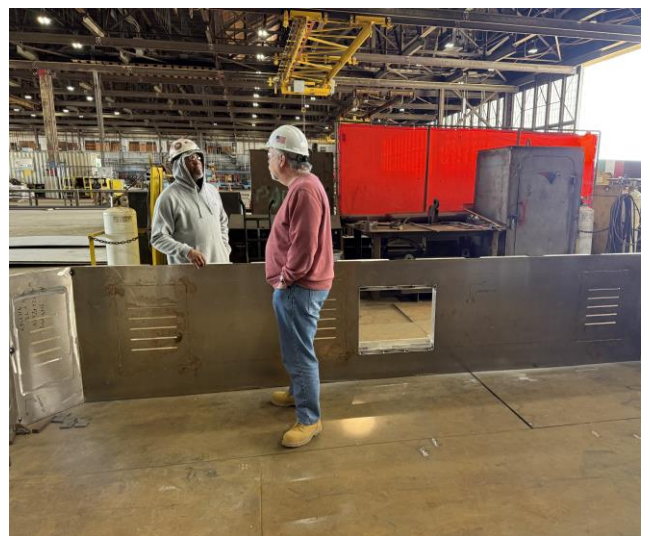


6283 – One of the Becker Rudders

MEMO



0149 – Fabricating Aluminum Console for Pilot House (Upside Down – Stern End)



0150 – Fabricating Aluminum Console for Pilot House (Side Return Between Bow and Stern Ends)



0151 – Fabricating Aluminum Console for Pilot House (Bow End)



0152 – Fabricating Aluminum Console for Pilot House (Bow End)

MEMO



Casco Bay Lines

Serving the Islands of Casco Bay from Portland, Maine



0153 – Fabricating Aluminum Console for Pilot House (Bow End)



0154 – Fabricating Aluminum Console for Pilot House (Side Return)

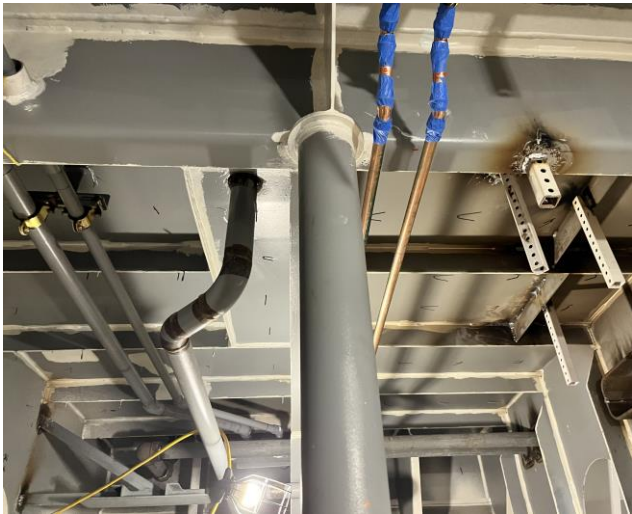


0155 - Fabricating Aluminum Console for Pilot House (Stern End w/Side Return)



0156 – Fabricating Aluminum Console for Pilot House (Stern End)

MEMO



6289 – Installing Tempered Water Piping with Downcomers and electrical Collar Penetration



6291 – Tempered Water Shut-Off Valve



6294 – Electrical Penetration Collars and Fire Main Piping



6295 - Electrical Penetration Collars and Fire Main Piping

MEMO



Casco Bay Lines

Serving the Islands of Casco Bay from Portland, Maine



6296 – Electrical Penetration Collars & Downcomers



6298 – Hatch w/ Lighting Foundation



6301 – Electrical Penetration Collar, Tempered Piping and Downcomers



6303 – Elec Cableway Supports with Penetration Collars

MEMO



6304 – Downcomers and Electrical Penetration Collars



6305 – Downcomers and Electrical Penetration Collars

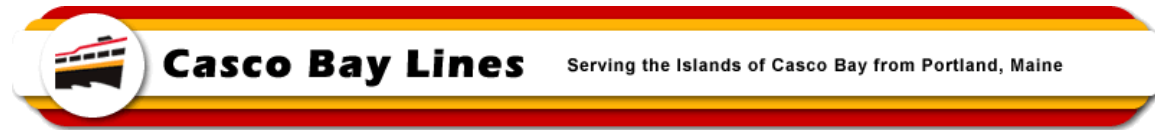


6306 – Painted Bench Frame Supports



6308 – Steering Gear Foundation in the Lazarette

MEMO



6309 – Steering Gear Foundation in the Lazarette
w/Electrical Penetration Collars



6310 – Rudder Post Tube & Steering Gear
Foundation

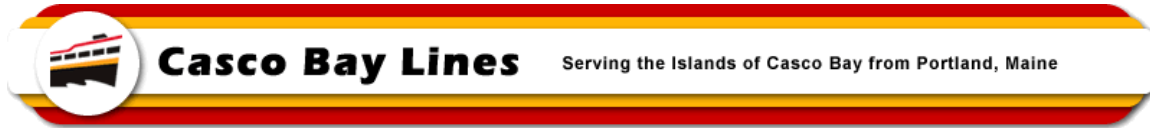


6330 – Shaft Support Bearing



6334 – Shaft Bulkhead Penetration w/Alignment
Nuts Ready for Seal

MEMO



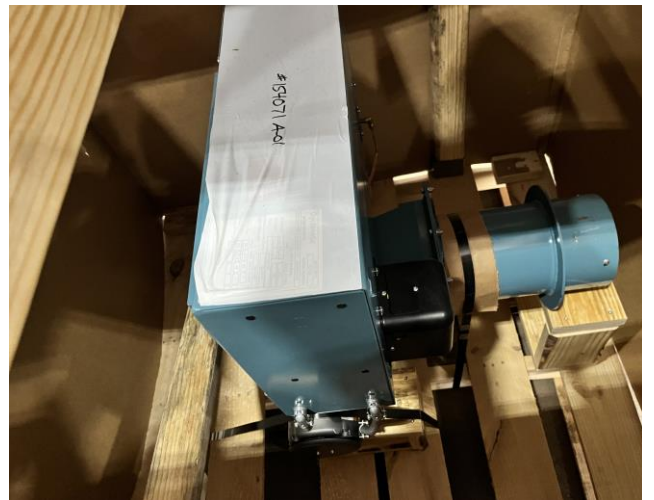
6338 – Fire Suppression Shut Off Valve



6353 – Boiler Circulator Motor

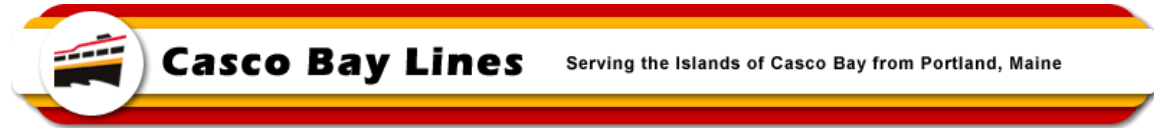


6354 – Burnham Boiler Core



6357 – Boiler Circulator Motor

MEMO



6360 – Tempered Water Piping, Electrical Penetration Collars & Downcomers (Tight Fit-Ups)



6361 – Tempered Water Piping, Electrical Penetration Collars & Downcomers (Tight Fit-Ups)

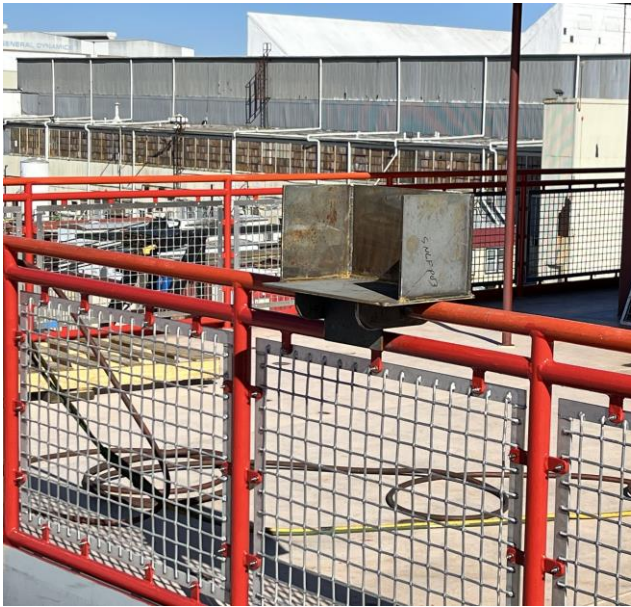


6362 – Main Deck Port Cabin Electrical Cableway Supports in Place



6363 – Studs for Wireway Support, Temp Water Piping Support and Joinery Track Framing in Place

MEMO



6375 – Typical Light Support Foundation



6376 – Port Side Light Foundation Support



6377 – Starboard Side Light Foundation Support

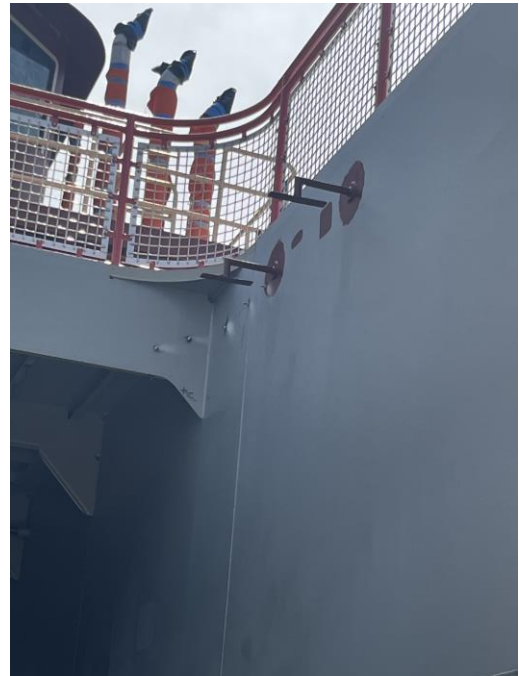


6378 – Starboard Side Light Foundation Support

MEMO



6381 – Battery Racks



6404 – Lighting Foundation for Vehicle Alleyway



6405 – Deck Drain Piping & Ceiling Frame in Place



6406 – Deck Drain w/Cleanout and Joinery Framing

MEMO



6409 – Tempered Water Line in Cabin



6410 – Tempered Water Line in Cabin



6411 – Tempered Water Line in Cabin



6417 – Temp Water Line, Joinery Framing and Cableway Supports in Place (Port Cabin)

MEMO



6418 – Restroom Piping



6423 – Restroom Piping



6422 – Restroom Piping



6421 - Temp Water Line, Joinery Framing and Cableway Supports in Place (Starboard Cabin)

MEMO



6432 – Piping, Cableway Supports and Lighting Foundations in Overhead of Vehicle Alleyway



6438 – Loud Hailer & Horns on Stern End of PH



6439 – Loud Hailer & Horns on Bow End of PH



6442 – PH Windows and Lighting Foundations on Mast

MEMO



Casco Bay Lines

Serving the Islands of Casco Bay from Portland, Maine



6490 – Fresh Water Hose Bibb



6493 – Typical Void Gooseneck Vent



6494 – Underside of PH with Light Supports,
Cableway Studs and Piping



6495 - Underside of PH with Light Supports,
Cableway Studs and Piping

MEMO



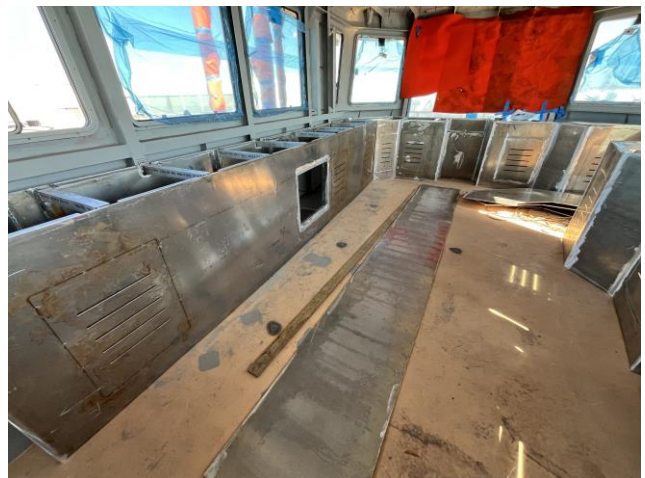
6496 – PH Console Being Fit (Bow End)



6497 - PH Console Being Fit (Stern End, But Not in Place Yet)



6498 – PH Console Being Fit (Return Side)



6499 – PH Console Being Fit (Bow End) w/Side Return

MEMO



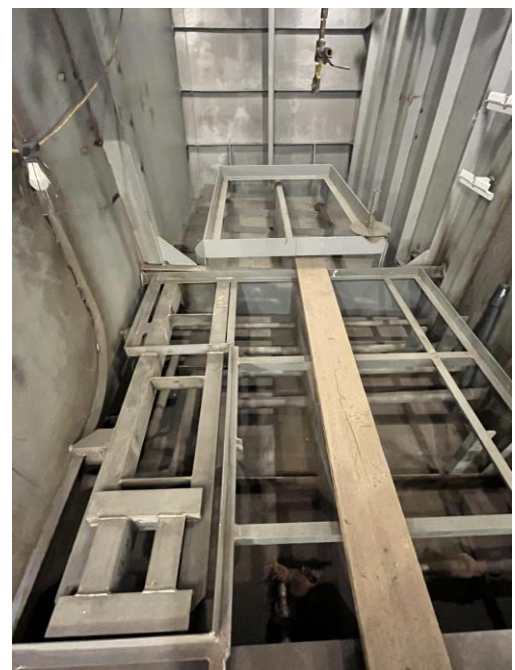
6500 – PH Top w/Horns & Lighting Foundations In



6501 - PH Top w/Horns & Lighting Foundations In

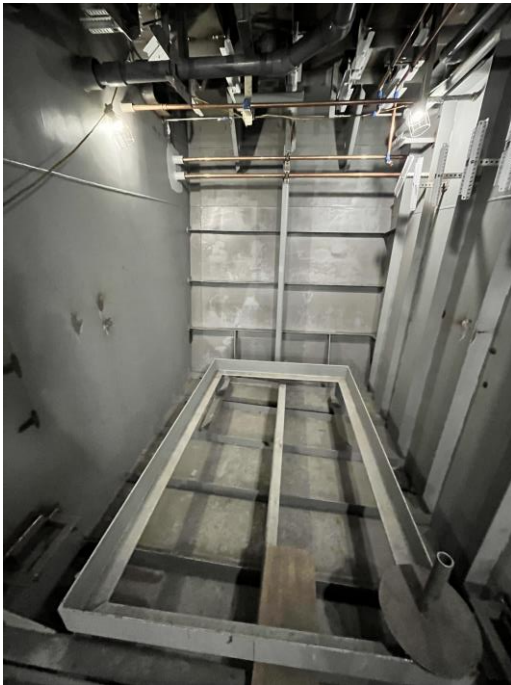


6502 – Port Cabin w/Cableway Supports, Temp Water Piping and Joinery Framing & Insulation



6533 – Portable Water Tank Foundation

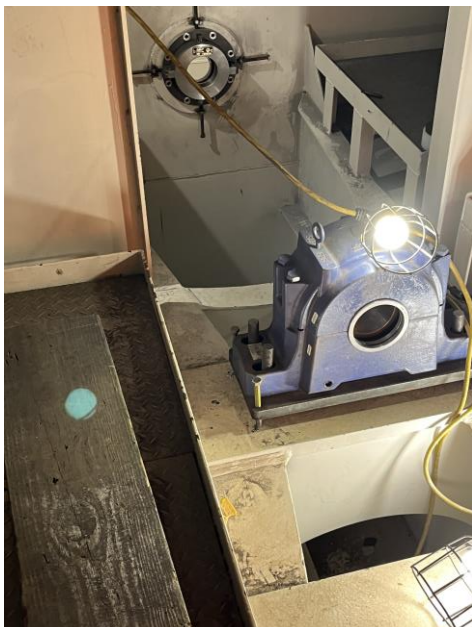
MEMO



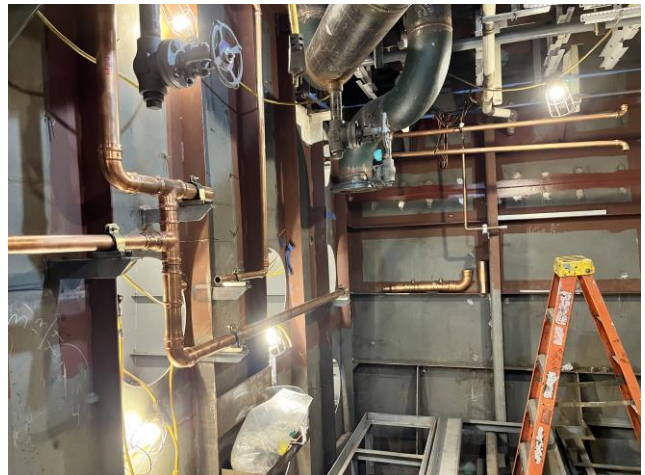
6534 – Sewer Tank Foundation



6543 – Battery Modules



6544 – Shaft Bearing in Foreground & Bulkhead Penetration Seal with Alignment Bolts in Background



6545 – Boiler Location w/Piping & Exhaust in Place

MEMO



Casco Bay Lines

Serving the Islands of Casco Bay from Portland, Maine



6547 – Sewer Tank w/Piping & Shutoffs



6548 – Piping & Cableway Supports – Note Lack of Space

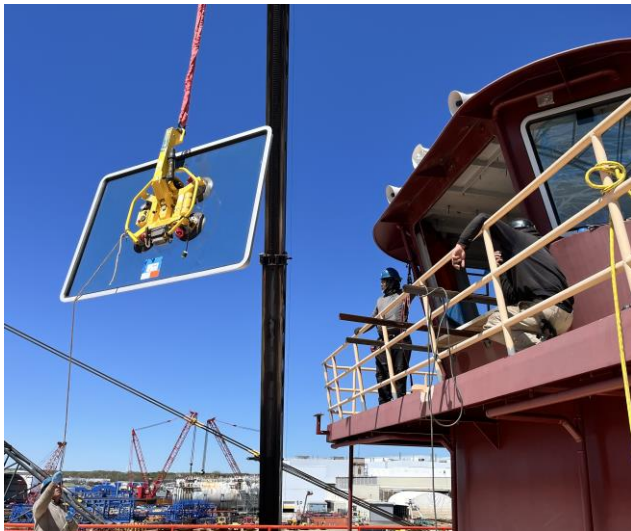


6549 – Typ. Gooseneck Vents



6552 – Painting on the Hull

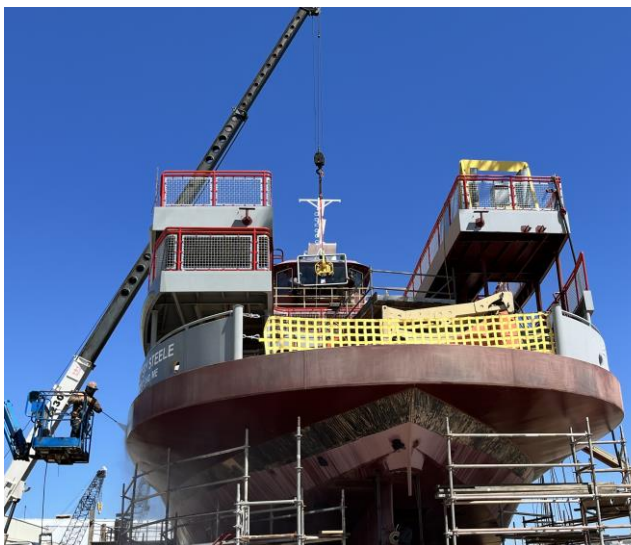
MEMO



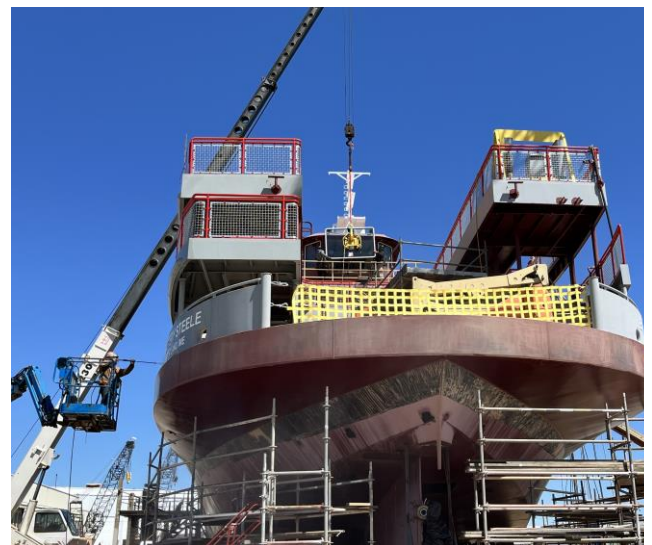
6551 – Installing Final PH Window



6553 – Installing Final PH Window



6554 – Installing Final PH Window



6555 - Installing Final PH Window

MEMO



Casco Bay Lines

Serving the Islands of Casco Bay from Portland, Maine



6515 – Shaft Tube w/Alignment Bolts



6516 - Shaft Tube w/Alignment Bolts

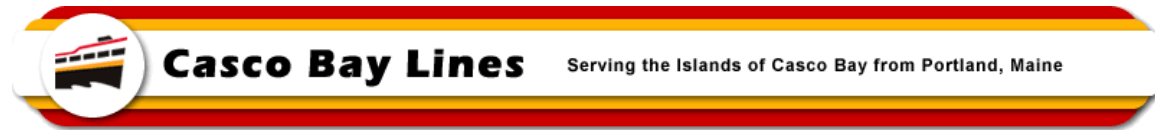


6518 - Shaft Tube w/Alignment Bolts

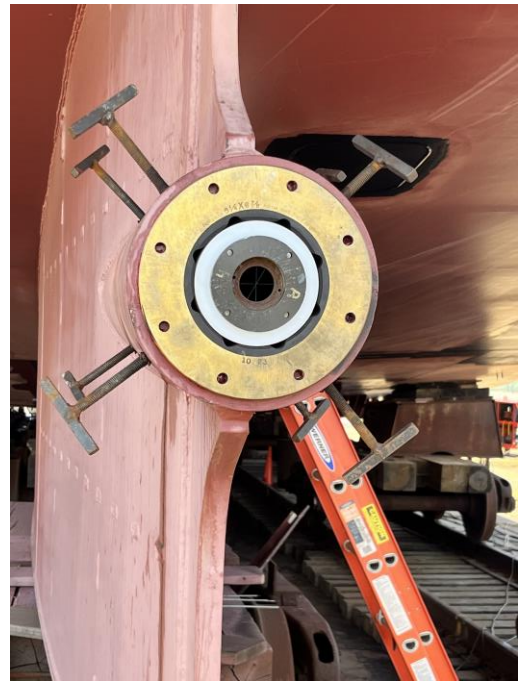


6519 – Shaft Tube w/Alignment Bolts

MEMO



6520 – Shaft Tube w/Alignment Bolts



6521 - Shaft Tube w/Alignment Bolts

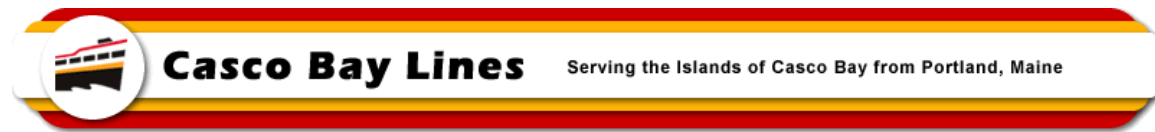


6522 – Shaft Tube w/Alignment Bolts



6526 – Shaft Tube w/Alignment Bolts & Vent & Fill Holes for Chock Fast

MEMO



6576 – Bottom Side of Bench Showing Structural Support to Prevent Sagging



6577 – Bottom Side of Bench Showing Structural Support to Prevent Sagging



6578 – Bottom Side of Multi-Person Bench Showing Structural Support to Prevent Sagging



6579 – Finished Bench

MEMO



Casco Bay Lines

Serving the Islands of Casco Bay from Portland, Maine



6599 – Fire Main Piping



6600 – Covering Windows to Protect from Painting

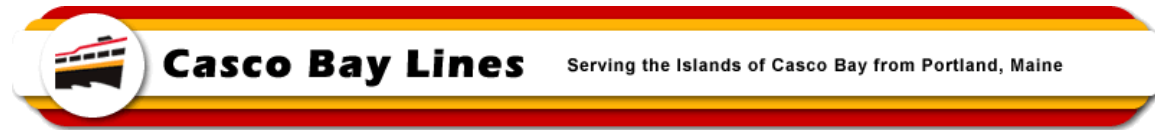


6601 – Applying Grey Coat Before Final White Coat of Paint



6602 – Applying Grey Coat Before Final White Coat of Paint

MEMO



6616 – Last Pilot House Window in Place



6619 – Last Pilot House Window in Place

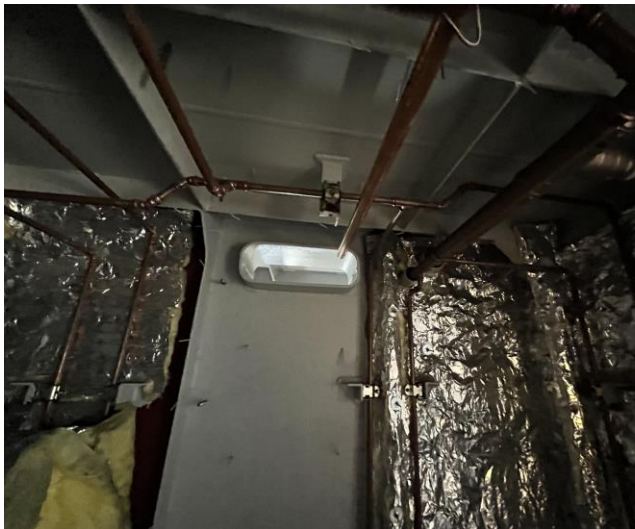


6617 – Console Pulled Out to Work on Penetrations



6618 – Console Pulled Out to Work on Penetrations

MEMO



6626 – Tempered Water Piping Being Installed for Heating



6627 - Tempered Water Piping Being Installed for Heating



6721 – Fill Pipes in Spill Collection Box



6723 – Drain Line w/Cleanout in Cabin Ceiling Space

MEMO



Casco Bay Lines

Serving the Islands of Casco Bay from Portland, Maine



6631 – Flood Light & Passenger Light Under PH



6634 – Passenger Lighting Under PH

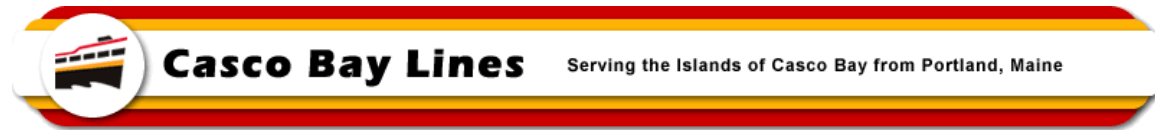


6632 - Passenger Lighting Under PH



6633 – Passenger Lighting Under PH

MEMO



6635 -Passenger Light and Nav Lighting Foundation



6639 – Passenger Lighting Under PH

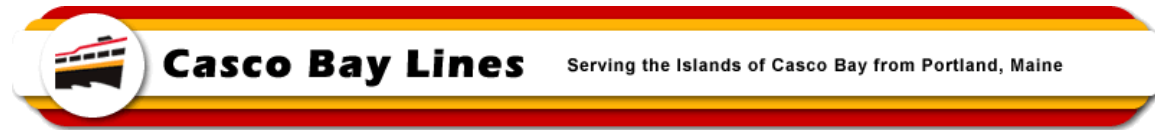


6640 – Side Lighting Foundation (Starboard Side)



6674 – Passenger Lighting Under 01 Deck

MEMO



6681 – Stern Light Foundation



6682 - Stern Light Foundation

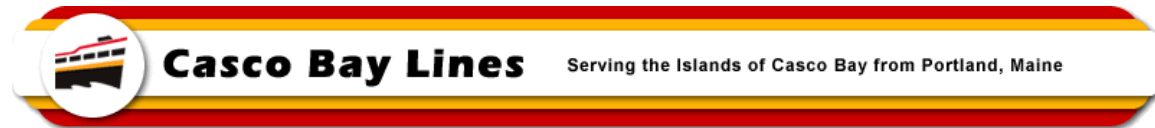


6695 – Lighting



6717 – Typical Bench (Not Set in Place Yet)

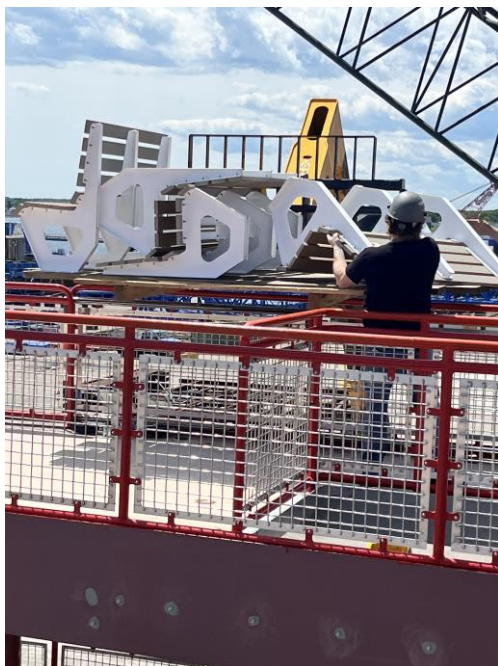
MEMO



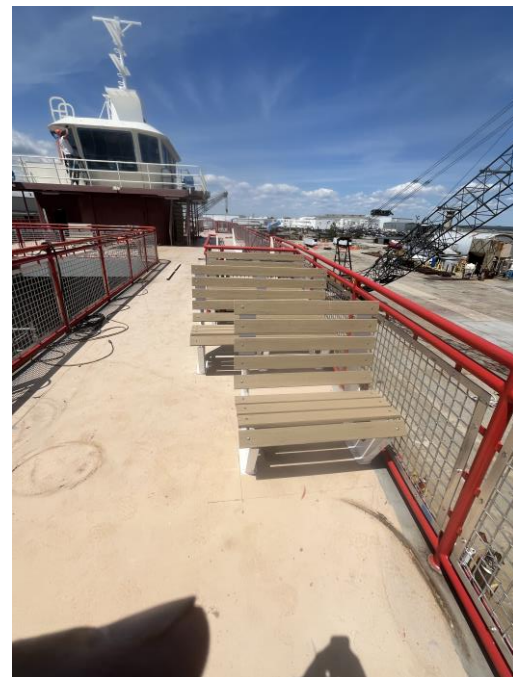
6716 – Benches Set on 02 Deck (Port Stern)



6718 - Benches Set on 02 Deck (Starboard Stern)



6719 – Benches Being Delivered to 02 Deck



6720 - Benches Set on 02 Deck (Port Bow)

MEMO



6624 – Starboard View with Some Finish Paint in Place



6677 – Starboard View with Iconic Colors Being Added