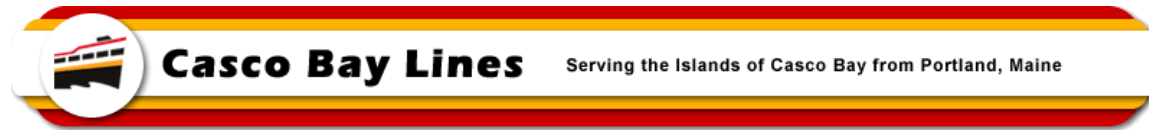


MEMO



TO: File

FROM: Paul D. Pottle, Director of Projects

DATE: April 16, 2025

SUBJECT: Construction Progress Report for MV Battery Steele - #13

This report covers construction at the Senesco Shipyard for the months of February 2025 and March 2025. The shipyard is making steady progress on many of the vessel's systems as well as the structure of the vessel. The last couple of months have seen an increase in the manpower effort across all aspects of construction and good progress is being made. There continues to be a big focus on painting sections of the vessel as work is completed and when painting is done in an area, if insulation is required, it is installed, and the area is readied for finishing. Equipment foundation work and floor framing work has progressed and is nearing completion. Some load-out of equipment has occurred and piping for the cooling systems was advanced. Work began also in various areas to support the upcoming installation of all of the electrical systems. Additional submissions were made to the Coast Guard, and some approvals were received. Inspections by the US Coast Guard are ongoing, with no major issues identified as of this writing. The Coast Guard is on site several times per week inspecting work completed since their last visit and signs off on work that meets the standards.

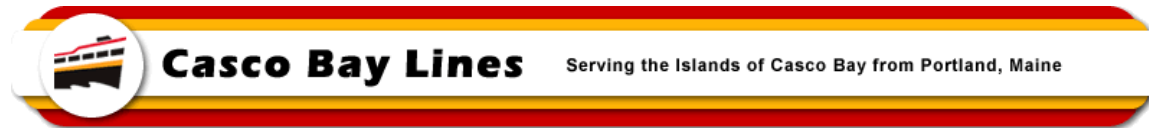
The shipyard did do a mock-up of the Pilot House console and CBL had a group of captains visit the yard to review the mock-up, suggest changes and help finalize where console controls and panels should be located for ease of operation. CBL staff also visited the shipyard to observe the work, continued the focus on schedule delivery and to review the first benches for approval before all of the benches are constructed. Staff did reject some of the benches and have worked with Senesco on an acceptable solution.

CBL did issue a contract modification for a new completion date, but did not waive the assessment of liquidated damages. Currently, the new completion date for the work is September 15, 2025. CBL and Senesco will continue to work together to try and improve on this date, but based on current progress and remaining construction activities, there is minimal opportunity to do so.

The following is a brief overview of the work done from February 1st, 2025, to March 31st, 2025:

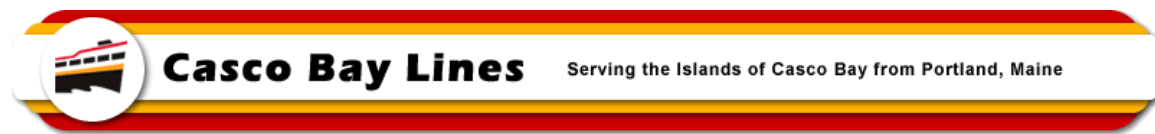
- Painting throughout the vessel to include but not limited to finish coating Voids 1 & 4; finish coating the Lazarettes; 50% complete on voids 2 & 3; vessel compartments; pilot house; passenger cabins; switchboard rooms; engine room and on various foundation frames.
- Continued to fabricate and install equipment foundation framing along with the grating floor framing throughout the vessel.
- Continued with insulation installation in various areas around the vessel. As painting is completed in an area, insulation is installed if required.

MEMO



- Fabricating and installing cableway and wireway collars and support members and started to install throughout the vessel.
- Installing downcomers for lighting and electrical support throughout vessel.
- Install and final weld the keel cooler guards
- Loaded out Voids 2 & 3 with propulsion motors, motor control cabinets, NOVEC fire suppression system bottles and the water mist fire suppression bottles.
- Continued work on cooling system piping for generators, HVAC systems, propulsion systems and stern tubes.
- Fabricated and prepared bench frames for painting and assembly. Made a sample of each size for compliance with the specifications.
- Prepared potable water and sewer tanks for installation.
- Continued with joinery work on interior compartments for future finishes.
- Installed HPU's in the Lazarette and staged various steering and shafting equipment.
- Painted ladders, wireway collars, and small foundations after final welding was completed.
- Started marking out anode and sonar transducer locations on hull.
- Fit up rudder posts.
- Prepared keel coolers for installation.
- Continued installing sanitary drain piping throughout vessel.
- Installed piping for lube oil system
- The boiler is on site, but not yet installed
- Installed exhaust piping for generator spaces
- Installed tonnage closure plates w/J bolts in Deck House.
- Modified mast arms for proper light spacing
- Have begun staging various pieces of equipment for installation.
- Have prepared a cut-out in the hull for loading equipment into switchboard rooms and engine room.
- Continued to work on and provide production packages to support the construction activities
- Made additional submissions as well as responded to inquiries for the US Coast Guard
- US Coast Guard continues to have a presence at the shipyard, inspecting completed work and signing off on areas that have passed the inspection

MEMO



2832 – In the Pilot House Looking Aft

MEMO



5823 – Pilot House Console Mock-Up w/Location of Controls Laid Out



5824 – Pilot House Console Mock-Up w/Location of Controls Laid Out

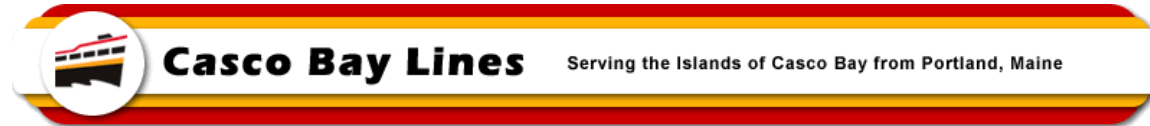


5825 – Pilot House Console Mock-Up w/Location of Controls Laid Out



5826 – Pilot House Console Mock-Up w/Location of Controls Laid Out

MEMO



5827– Pilot House Console Mock-Up w/Location of Controls Laid Out



5828 – Pilot House Console Mock-Up w/Location of Controls Laid Out



5831 – Captains Visit to Review Pilot House& Vessel



5834 – Captains Visit to Review Pilot House& Vessel

MEMO



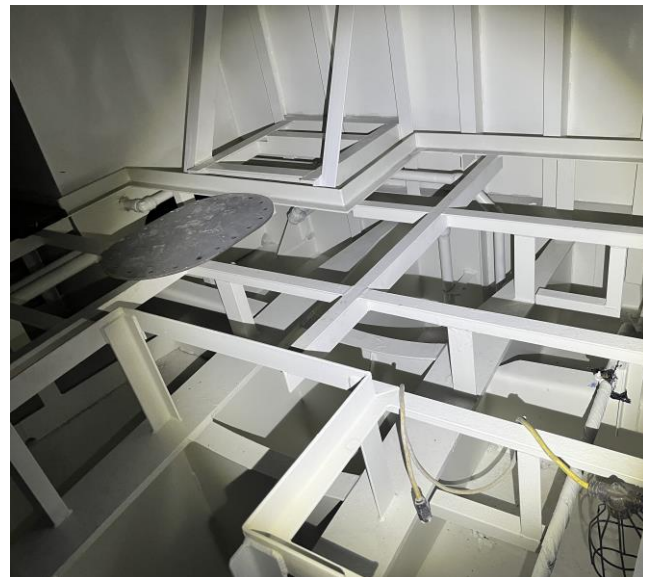
5840 – Typ. Floor Framing in Voids & Engine Room
Being Made Ready for Floor Plating



5842 – Typ. Floor Framing in Voids & Engine Room
Being Made Ready for Floor Plating



5844 – Typ. Floor Framing in Voids & Engine Room
Being Made Ready for Floor Plating



5847 – Typ. Floor Framing in Voids & Engine Room
Being Made Ready for Floor Plating

MEMO



5845 – Bulkhead Penetration from Switchboard Room to Battery Room



5859 – Preparing Keel Coolers

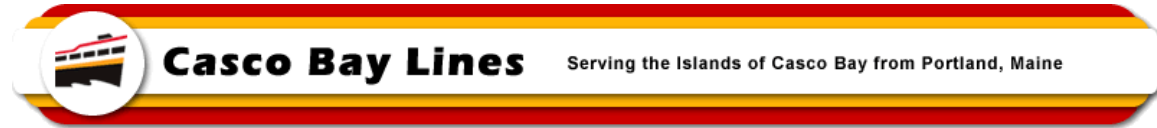


5860 - Preparing Keel Coolers



5861 – Preparing Keel Coolers

MEMO



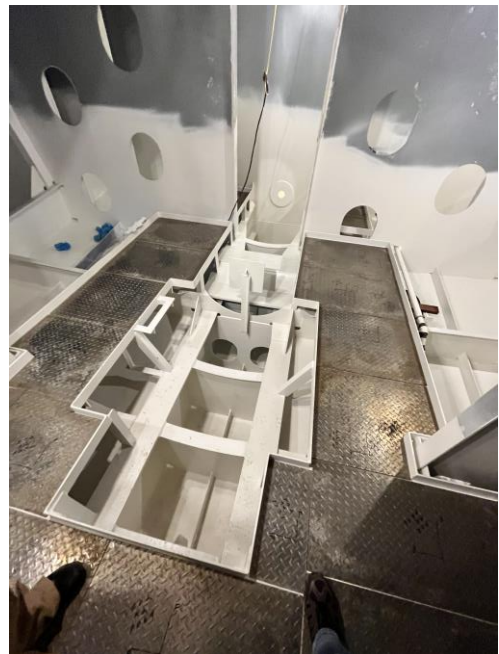
5864 – Fabricated Bench Seating Frames Ready for Painting



5865 – Installed Floor Plating in a Void Area

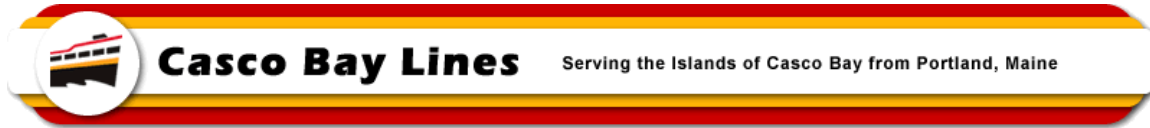


5866 – Installed Floor Plating in a Void Area

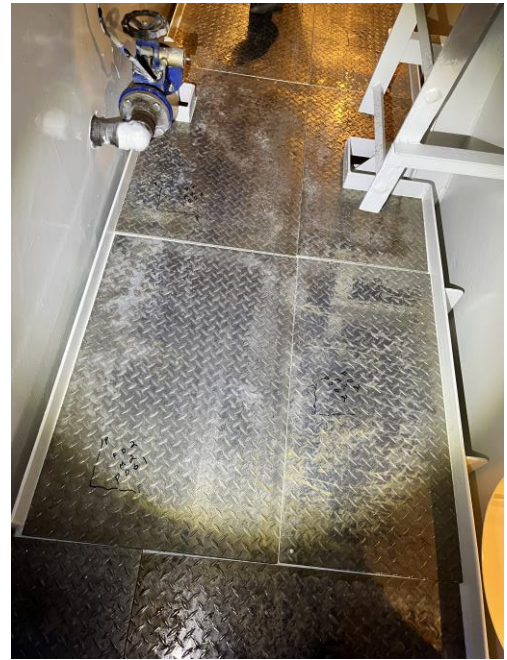


5867 - Installed Floor Plating in a Void Area

MEMO



5868 – Installed Floor Plating in a Void Area



5869 – Installed Floor Plating in a Void Area

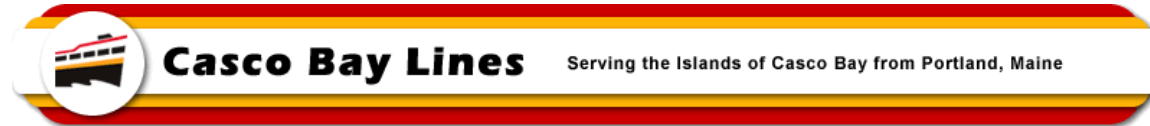


5922 – Installing Fire Suppression System Canister

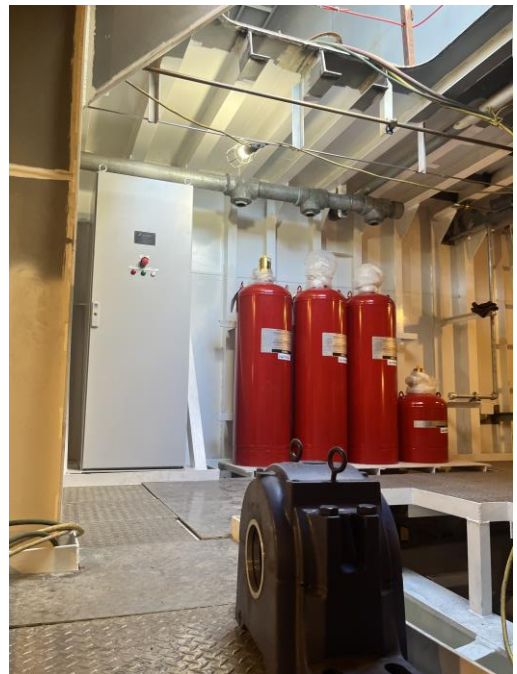


5923 - Installing Fire Suppression System Canister

MEMO



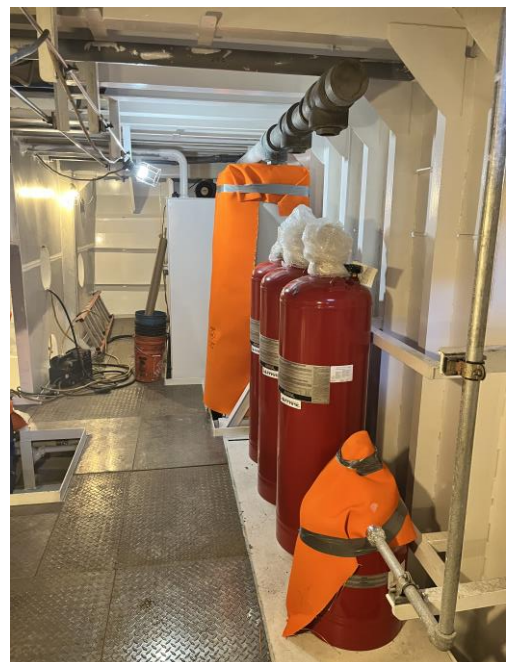
5925 – NOVEC Fire Suppression System Canisters



5930 – NOVEC Fire Suppression System Canisters



5938 - Fire Suppression System Canisters (Covered to Protect from Other Work Once Installed)



5941 – NOVEC Fire Suppression System Canisters

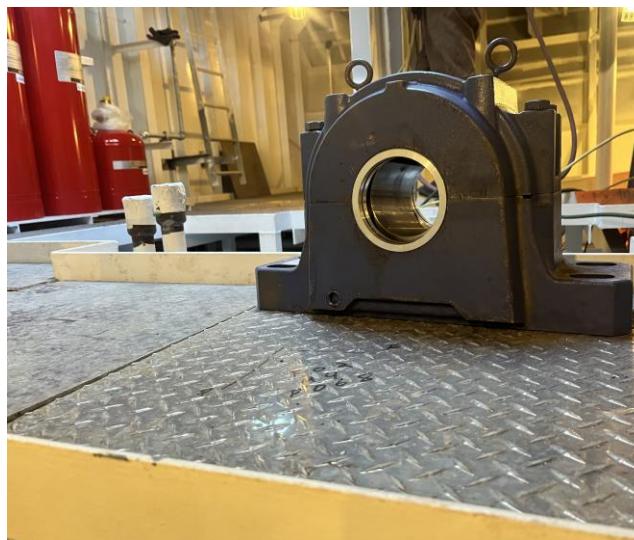
MEMO



5927 – Two Main Propulsion Motors



5928 – Shaft Bearings being Delivered to the Site

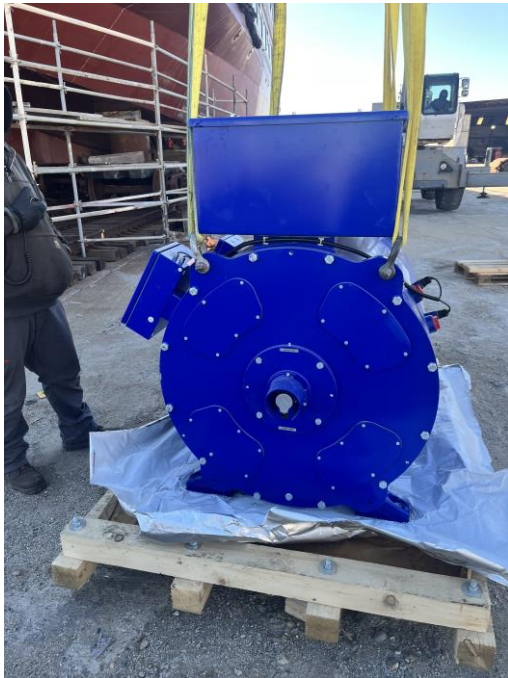
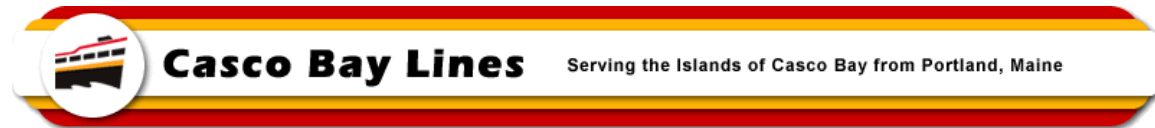


5931 – Shaft Bearing

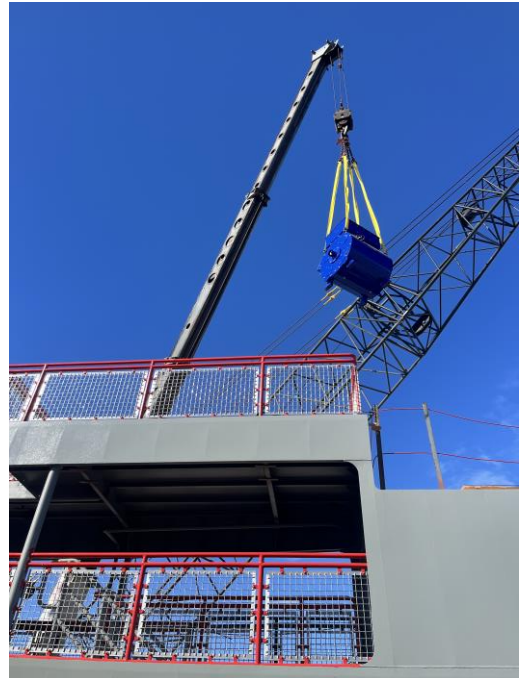


5933 – Brake Rotor for the Torsional Coupling

MEMO



5934 – Prepared to Lift Main Propulsion Motor



5935 – Lifting Main Propulsion Motor into Vessel



5936 – Lifting Main Propulsion Motor into Vessel



5937 – Lifting Main Propulsion Motor into Vessel

MEMO



5939 – Main Propulsion Motor Set & Protected



5942 – Water Mist Fire Suppression Bottles on a Pallet

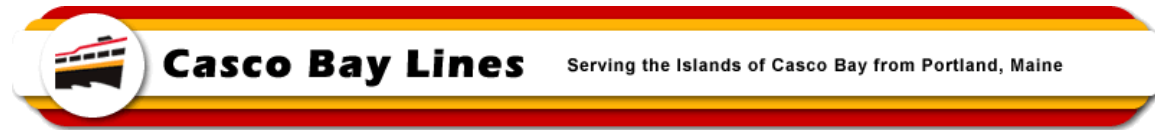


5943 – Main Propulsion Motor Set In-Place



5944 – Rotor, Bearings and Torsional Coupling in Crate

MEMO



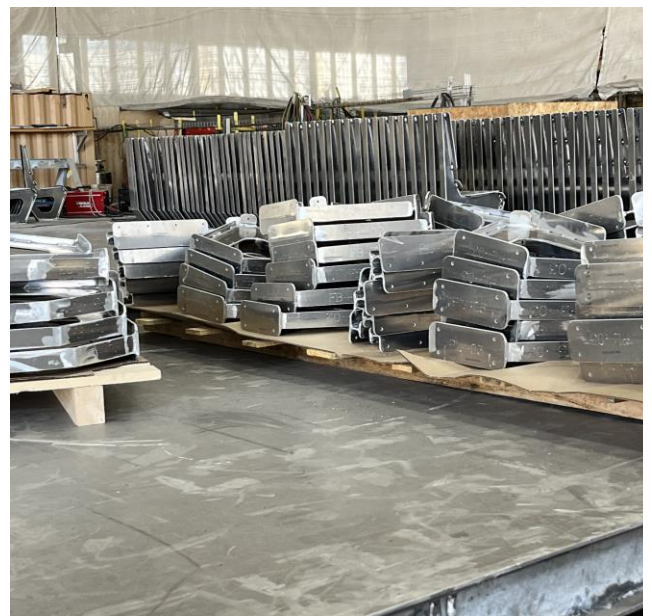
5962 – Sample Benches



5965 – Pallet of Composite Timber for Benches

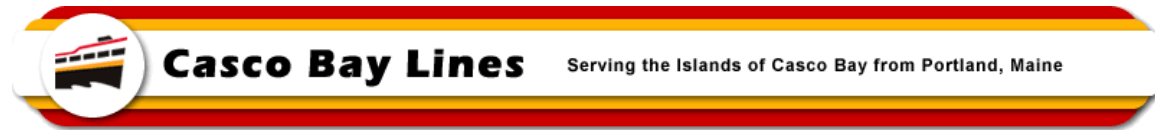


5966 – Bench Support Frames - Painted



5967 – Bench Support Frames Fabricated and Cleaned for Painting

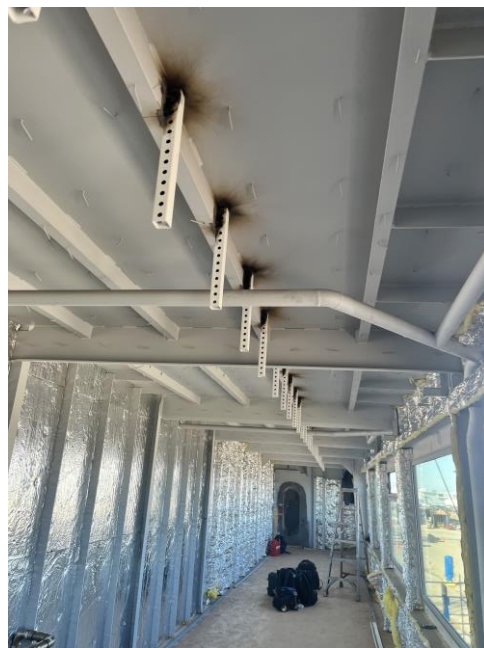
MEMO



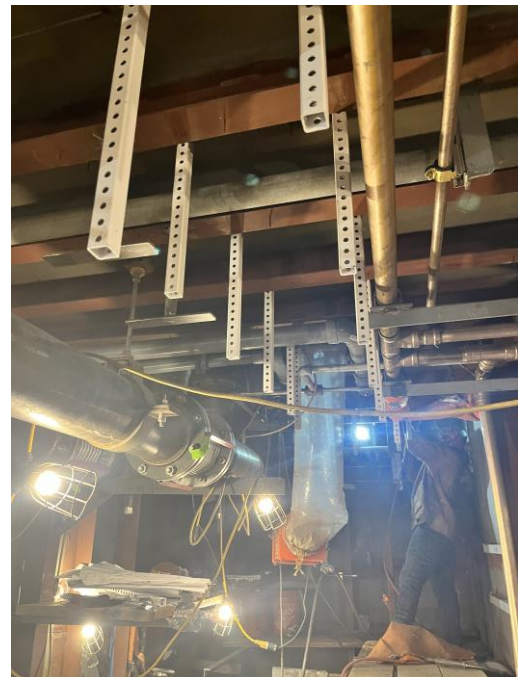
5969 – Starboard Cabin w/ Insulation, Insulation Studs, Piping and Downcomer Lighting Supports



5970 – Same



5971 – Port Cabin w/ Insulation, Insulation Studs, Piping and Downcomer Lighting Supports



5972 – Lighting Supports and Piping in Engine Room

MEMO



5974 – Machinery Space w/Cooling System
Circulation Pumps being Installed



5975 – Bulkhead Seal for Shaft



5976 – Access Hatch Handle, Downcomer Lighting
Supports and Piping Valves in a Void Space



5977 – Access Hatch Handle, Downcomer Lighting
Supports and Piping Valves in a Void Space

MEMO



5978 – Shaft Cutlass Bearing on Stern Tube



6001 – Bulkhead Penetration Collars

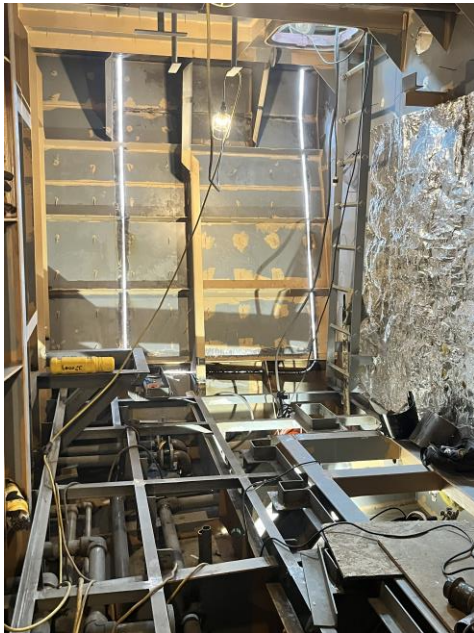


6003 – Cooling Pumps and Tanks in Machinery Space



6011 - Cooling Pumps and Tanks in Machinery Space

MEMO



6012 – Access Cut in Hull in Switchboard Room for Loading Out Equipment



6016 – Starboard Cabin Showing Framing for Window Finishing



6019 – Some Assembled Bench Seats Before Timber is Added



6020 - Some Assembled Bench Seats Before Timber is Added

MEMO



Casco Bay Lines

Serving the Islands of Casco Bay from Portland, Maine



6021 – Assembling Bench Seating Frames



6022 - Assembling Bench Seating Frames



6024 – Hull Access Hole Cut for Loading Equipment
in Switchboard Room



6025 - Hull Access Hole Cut for Loading Equipment
in Switchboard Room

MEMO

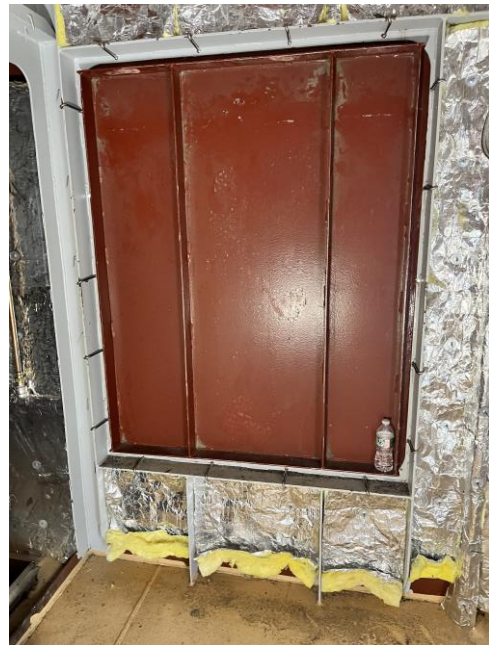


Casco Bay Lines

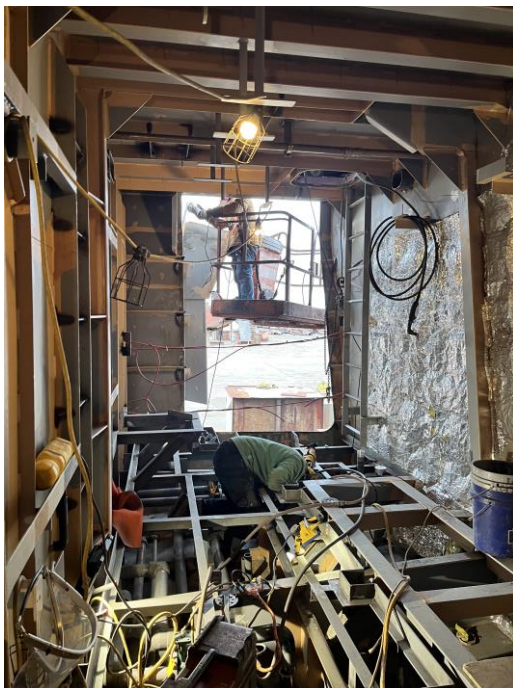
Serving the Islands of Casco Bay from Portland, Maine



6028 - Hull Access Hole Cut for Loading Equipment in Switchboard Room



6029 – Tonnage Frame in Crew Lounge Bulkhead on 02 Deck

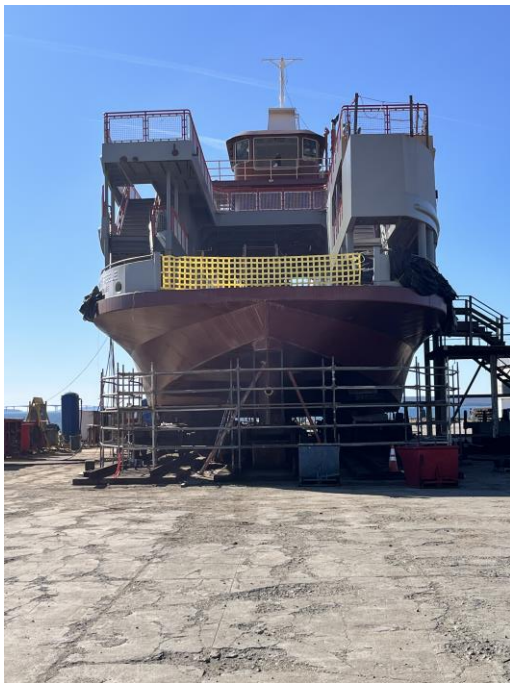


6031 – Access into Switchboard Room Thru Hull

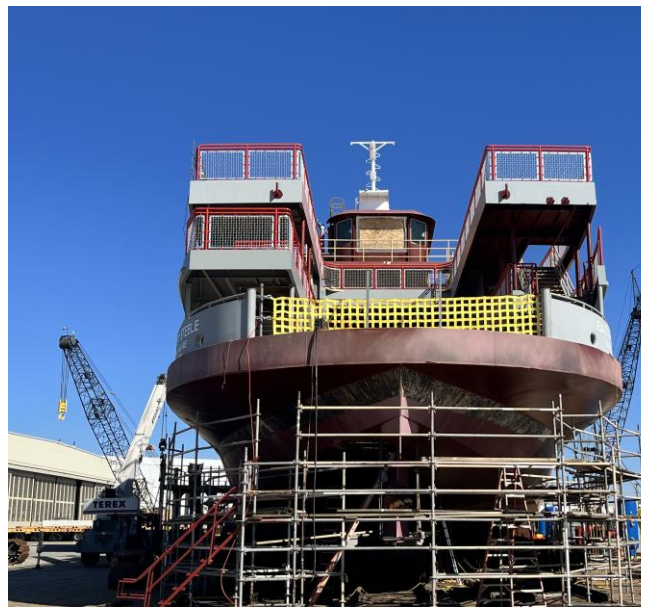


6052 – Exhaust Fans for Engine Room

MEMO



6055 – Stern of Vessel w/ Barrier Netting



6056 - Bow of Vessel w/ Barrier Netting



6057 – Access to Crew Head in Crew Lounge



6058 - Access to Electronics Room from Lounge

MEMO



6061 – Jastram Hydraulic Unit for Steering System in Lazarette



6063 – Circulator Pumps in Machinery Space

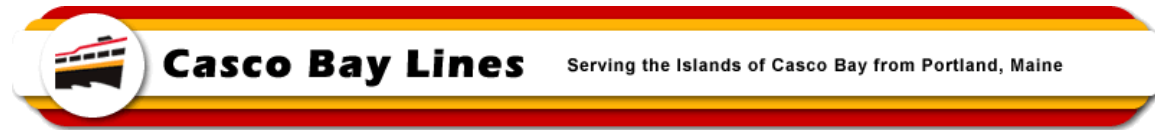


6085 – Port Cabin w/Insulation, Lighting Supports and Insulation Studs



6086 – 01 Starboard Cabin w/Insulation, Lighting Supports, Piping and Insulation Studs

MEMO



6087 – Piping in Public Head



6088 – Becker Rudders

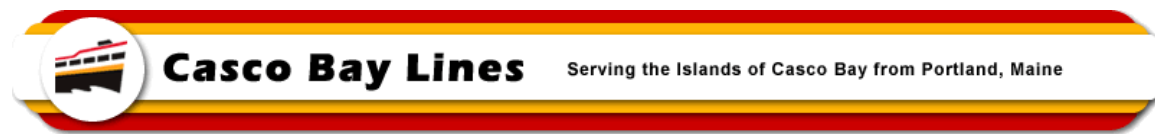


6089 – Becker Rudder



6090 – Rudder Posts

MEMO



6091 – Rudder Post



6094 – Extended Mast Arms for Proper Lighting Spacing

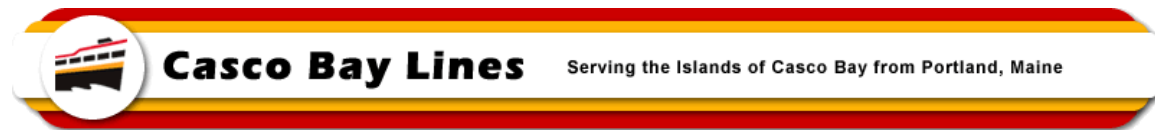


6095 – Fitting Rudder Post



6097 - Fitting Rudder Post

MEMO



6096 – Typical Anode



6098 - Typical Anode



6099 - Typical Anode



6123 – Generator Space, Note Exhaust Piping overhead

MEMO



6124 – Generator Space w/Propulsion Cooling Tank



6126 - Generator Space w/Propulsion Cooling Tank



6169 – Electrical Chase with Collars & Supports



6172 – Mast Arm Extensions for Proper Light Spacing

MEMO



6175 – Generator Space w/Cooling Tanks and Exhaust Piping



6176 – Machinery Space with Pumps and Piping being Connected

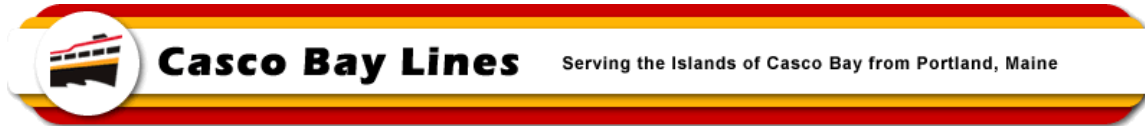


6177 – Typ. Circulator Pump



6178 – Potable Water & Sewer Tanks

MEMO



2835 – 02 Deck Electronics Room Insulation



2836 – 02 Deck Crew Lounge Area

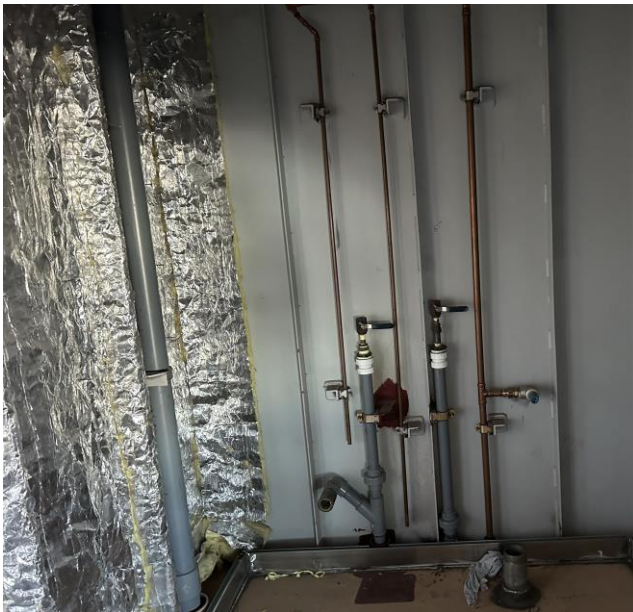


2841 – 02 Deck Crew Head



2842 – 01 Starboard Cabin

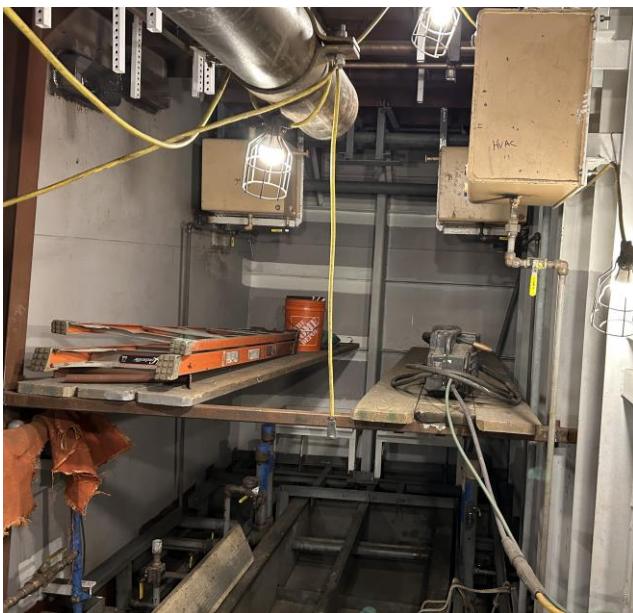
MEMO



2843 – 01 Deck Public Head Piping



2844 – 01 Deck Starboard Cabin

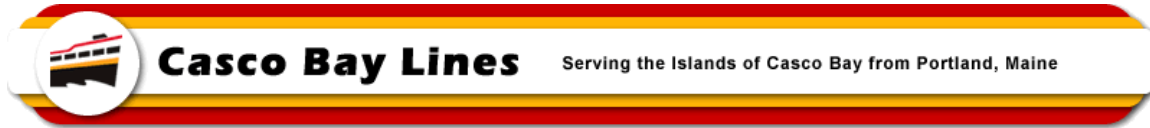


2845 – Generator Space



2846 – Pump Machinery Space

MEMO



2847 – Generator Space



2848 - Generator Space



2849 – Hatch Access to a Void Space



2852 – Looking Down Vehicle Alleyway

MEMO



Casco Bay Lines

Serving the Islands of Casco Bay from Portland, Maine



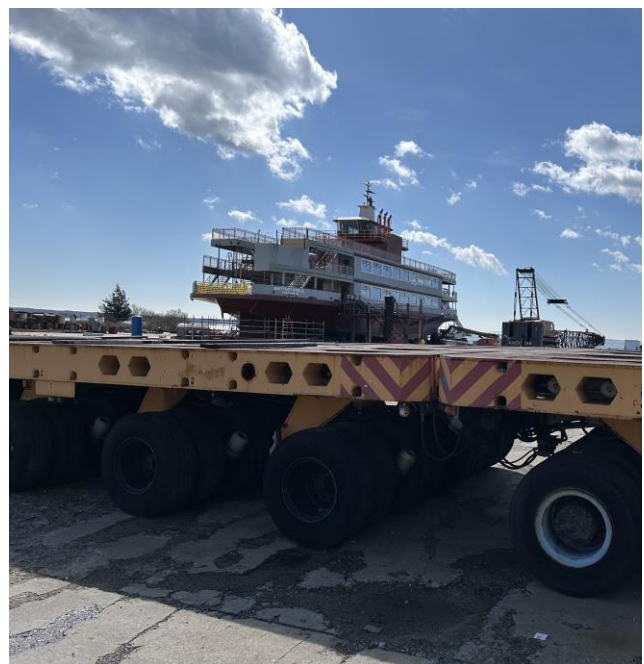
2854 – Keel Cooler Guards on Hull



2856 – Prepared Keel Coolers, Ready for Installation

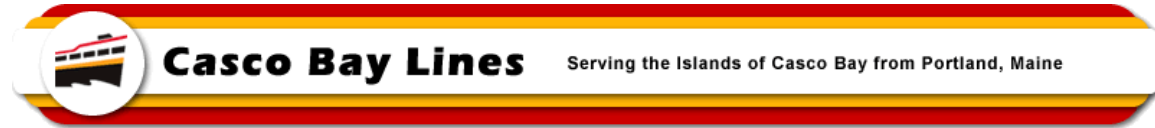


2857 - Prepared Keel Coolers, Ready for Installation



2855 – View of Battery Steele Across Shipyard

MEMO



2853 – Port Side of Battery Steele